



Return to School

Walt Morey Middle School

Hybrid Instruction

Spring 2021

Start Dates:

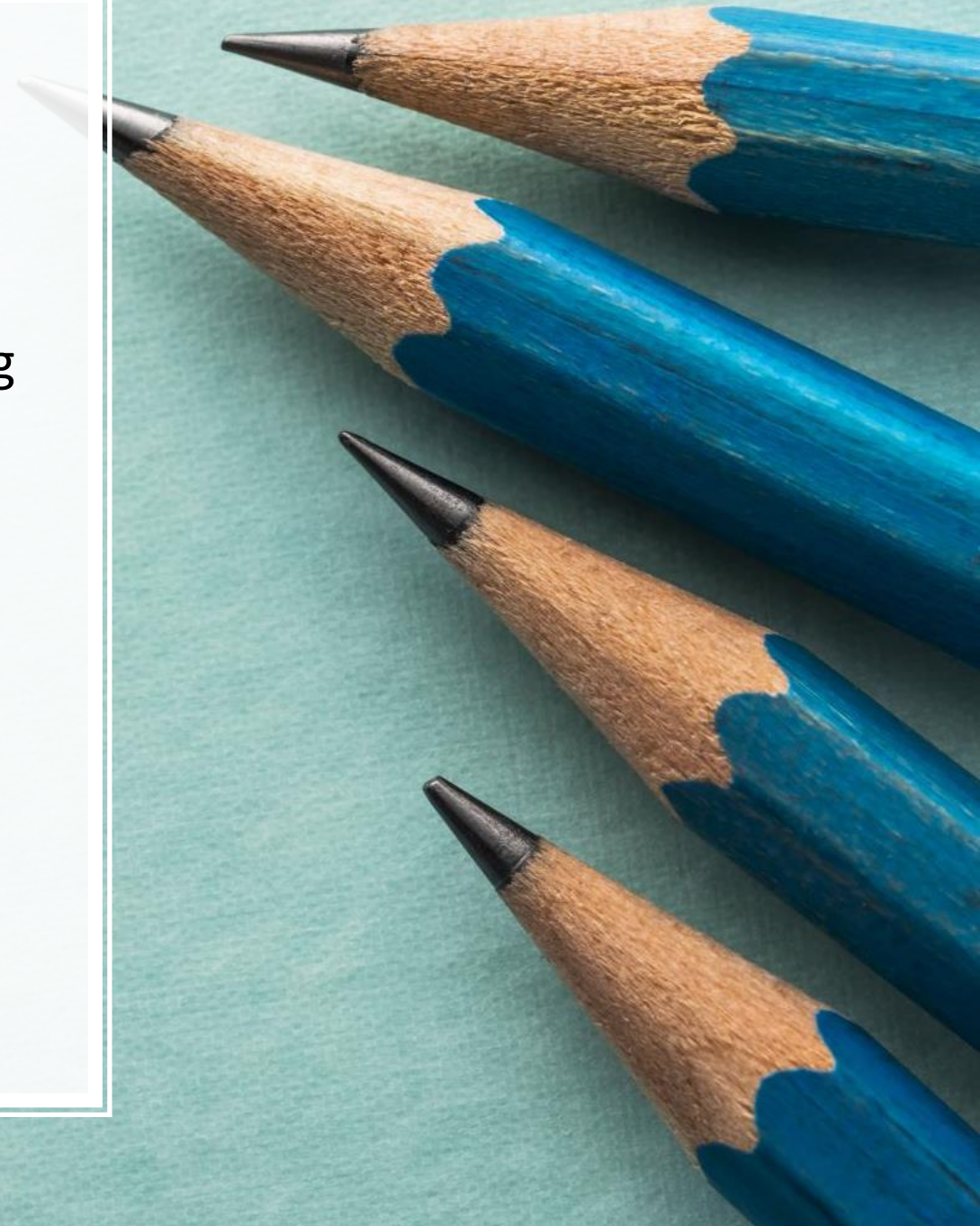
6th Grade:
Week of
4/19

7th & 8th
Grade: Week
of 4/26



Overview

- Comprehensive Distance Learning will be offered for the remainder of the year for all students during the morning hours. (8:30-10:45)
- The Hybrid schedule will offer two days per week in-person learning, (12:00-3:00) focused on social-emotional and academic support, as well as enrichment activities.



Hybrid

- Students who select hybrid will attend all of their CDL classes in the morning. They will come to school in the afternoon for lunch, homeroom, and tutorial/enrichment support from their core teachers.
- There will be optional, online elective tutorials and enrichment activities offered in the afternoon for CDL only students, as well as for hybrid students on days when they are not in the building. (1:15-2:45)





Homeroom

- Once hybrid begins, all homeroom classes will move to the afternoon.
 - **All students** will attend homeroom either in building or online.
- Students will attend in-person with their homeroom cohort.
- Students who choose hybrid will continue in the same homeroom class. This class will meet online on Mondays and in the the building for an additional 2 days per week.
 - Each hybrid homeroom class will be divided into 2 groups. One group will come Tuesday and Wednesday, and the other group will come on Thursday and Friday.
- Students who choose CDL only will be re-assigned a homeroom class that will meet online only, three days per week.



Music Classes:

All music courses will remain virtual (10:50-11:20) and will continue meeting on the same A Day/B Day schedule.



Time	Monday	Tuesday	Wednesday	Thursday	Friday
8:00-8:30	Teacher Office Hours	Teacher Office Hours	Teacher Office Hours	Teacher Office Hours	Teacher Office Hours
8:30-9:00	Applied Learning	Period 1: CDL	Period 8 CDL	Period 1: CDL	Period 8: CDL
9:05-9:35		Period 2: CDL	Period 7: CDL	Period 2: CDL	Period 7: CDL
9:40-10:10		Period 3: CDL	Period 6: CDL	Period 3: CDL	Period 6: CDL
10:15-10:45		Period 4: CDL	Period 5: CDL	Period 4; CDL	Period 5: CDL
10:50-11:20		Period 0: Music CDL 8 th Grade Band 8 th Grade Orchestra	Period 0: Music CDL 7 th Grade Band 7 th Grade Orchestra Choir	Period 0: Music CDL 8 th Grade Band 8 th Grade Orchestra	Period 0: Music CDL 7 th Grade Band 7 th Grade Orchestra Choir
11:20-12:00		Break Transportation to school	Break Transportation to school	Break Transportation to school	Break Transportation to school
12:00-12:30	Lunch	Lunch	Lunch	Lunch	Lunch
12:30-1:15	Homeroom: CDL	Homeroom: CDL & Hybrid	Homeroom: CDL & Hybrid	Homeroom: CDL & Hybrid	Homeroom: CDL & Hybrid
1:15-2:45	Applied Learning	Tutorial/Enrichment CDL & Hybrid	Tutorial/Enrichment CDL & Hybrid	Tutorial/Enrichment CDL & Hybrid	Tutorial/Enrichment CDL & Hybrid
2:45-3:00		Dismissal	Dismissal	Dismissal	Dismissal

Schedule

Safety

- All students and staff will wear masks per the Governor's guidance.
- All students and staff will abide by sanitation restrictions per state guidance.
- Students will ride traditional bus routes.
- Students will be escorted off of buses and directed to their assigned entrance where they will undergo a health screening prior to entering building.
- Students will pick up lunch at their entrance and eat it in their homeroom class.
- Students will be supervised in the hallway to ensure social distancing.
- Students will not be able to mingle with students from other classroom cohorts.





Questions

