

# SALISH PONDS ELEMENTARY

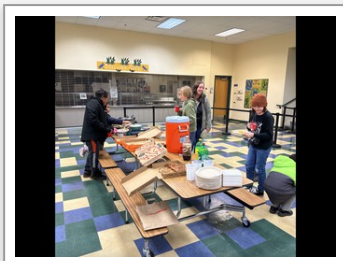
FEBRUARY, 2023

## FEBRUARY FUN!

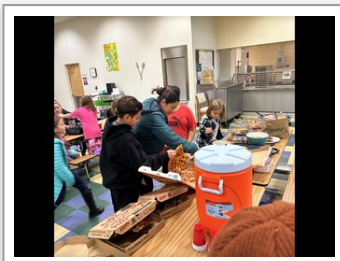
January flew past us all quickly! As we enter February, we are full of friendship conversations, student check ins with their growth on their STAR assessments and working hard to prepare for the middle of the school year! June will be here faster than we know it.

We are continuing to lower our rate of absences than the previous months! It's wonderful to see the growth and success everyone is making with their continued attendance at school. This lowers frustration levels, confusion, and understanding. We are better when we are together!

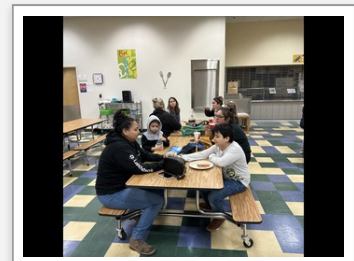
Thank you to all who came to our Family Potluck on the 26th! It was a hit with many families and the food was amazing! Families brought in homemade dishes they were happy to share with others! Please look below for our next family activity later this month.



**POTLUCK FUN!**



**ENJOYING A MEAL TOGETHER!**



**THANK YOU FOR BEING PART OF OUR COMMUNITY!**

## PTO UPDATE

During our potluck last month, some families were asking about our PTO and who they could talk with. We don't currently have a PTO as Salish, and we would like to get this started, as we are planning for activities in Spring and end of the year. Please reach out if you are interested in being a part of this, please reach out to Mrs. Stevens and Mrs. Rose

[rjones@rsd7.net](mailto:rjones@rsd7.net) and [vrose@rsd7.net](mailto:vrose@rsd7.net)

We look forward to supporting our scholars!

## IMMUNIZATION EXCLUSION

Exclusion day for the state of Oregon is Wednesday, February 15th. Letters will be mailed to parents whose children are not up to date or whose records are incomplete. If you receive a letter, please update your information as soon as possible to avoid your student being excluded from school. If you need help locating a health care provider or clinic, please contact our school Nurse Pham Tram.

## COUNSELORS CORNER!

### February - Friendship

A warm hello from your Salish Ponds counselors!

We hope you are staying safe and bundled up from all the wind and cold. Hard to believe it is February already! For this month, we are celebrating the theme of Kindness, with a side of Friendship. We will be visiting classrooms in the next couple of weeks to highlight what Kindness is and how we can show it in our school and community. We lean on each other to model kindness such as saying kind words, holding the door open for a person, and offering help you see someone needing support. These little acts of Kindness are important in everyday life.

Friendships are an ongoing process. They can be both easy and fragile. If your student seems down one day, you have the opportunity to model friendship skills by checking in with them, asking them what they need, and helping them navigate their situation.

A special drawing will be held this month for all students who practice acts of Kindness to fill their "Friendship Bucket" that they will get from their teachers. More details to come!

Check out the books about Kindness that follow that you can read with your scholar!

Here are some books for K-2nd:

- When We Are Kind / Nihá'ádaahwiinít'íigo (English and Navaho Edition) by Monique Gray Smith
- I Walk with Vanessa: A Picture Book Story About a Simple Act of Kindness by Kerascoët
- Last Stop on Market Street by Matt de la Peña
- Each Kindness by Jacqueline Woodson

The books for 3rd-5th that follow are all E-books:

- The Little Things: A Story about Acts of Kindness by Christian Trimmer & Kaylani Juanita
- Pete the Cat's Groovy Guide to Kindness by Kimberly & James Dean
- The Notebook Keeper: A Story of Kindness from the Border by Stephen Briseno and Magdalena Mora
- The Power of One: Every Act of Kindness Counts by Trudy Ludwig & Mike Curato
- Henry is Kind by Linda Ryden & Shearry Malone

Thank you for being leaders of kindness for our Dragonfly community!

We are here to support your student and your family! Please feel free to contact us if you have any questions. Puka Ahina, Social Worker, x 3008, Arianne Delos Reyes, K-2 School Counselor, x3016, Virginia Rose, 3-5 School Counselor, x3037.

## **FAMILY FUN NIGHT!**

We are excited to have you join us on Thursday, February 23rd, for a fun Math art night with our staff!

Grade level teams will be greeting your families in one of their grade level rooms (room # information to come) to play some math games and connects with art. Please come visit us from 5:30-7pm for some art and mathematics to take home!

## **STATE TESTING OPT OUT**

State standardized testing will start at Salish Ponds soon. If you do not want your student to participate in the state testing this year, please contact the school so we can provide you with the appropriate form.

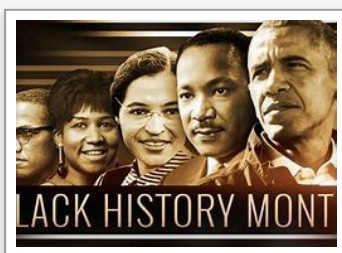
The ELPA (English Language Proficiency Assessment) will open on January 17th. Your child's attendance during our testing times will be imperative for the success of their completion and results.

If you have other questions, you can contact Mrs. Bentley.

## **CULTURAL AWARENESS: BLACK HISTORY MONTH!**

In February scholars will be learning about Black History month. It began as a way of remembering important people and events in the history of the African diaspora. It is celebrated in February in the United States.

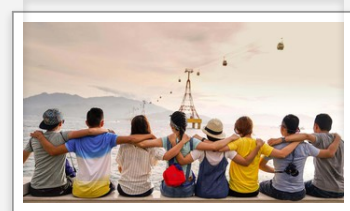
Please look for activities coming home from your scholars learnings!



**HONORING BLACK**



**HISTORY MONTH!**



**FRIENDSHIPS ARE  
IMPORTANT IN LIFE!**

## REPORT CARDS

On Friday, February 3rd, your child's first semester report card will be mailed home. They are also available on ParentVue.

Here are a few pieces of information about our report cards:

- Some areas of the report card may not be completed during the first semester, but each section will be graded at least one time within the school year.
- Report cards are done twice a year- in February and June.
- This report is based on knowledge and skills students should have at the end of the school year. Their current score is a reflection of where they are at this time on the continuum of learning toward the end of the year standard.

## VALENTINES DAY/FRIENDSHIP DAY

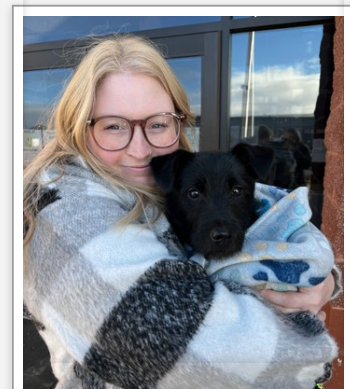
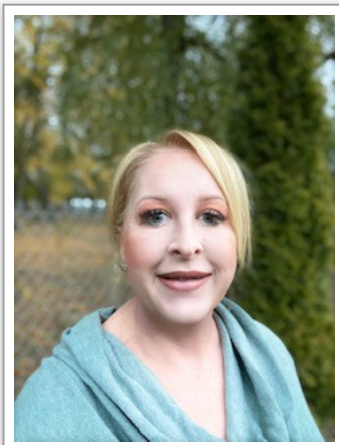
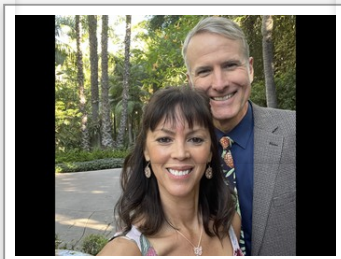
On February 14th, for the last 45 minutes of the day will be, "Friendship Celebrations," in all classrooms. Per district guidelines and communications, there will not be an allowance for sweets and treats. If you are looking for prizes remember items that can be helpful to our students at school are always welcome (pencils, erasers, pens, etc.).

Please note that all month-long students will be able to send Friendship grams throughout the building. This is for ALL students!

## MEET SOME OF OUR STAFF!

Since COVID, and changes, we haven't all been able to meet and learn about each other. In the coming months we want to share about our amazing staff at Salish!

This month We want to introduce our Kindergarten teachers, a specialist, and support person.



## CAT MONROY

Greetings! I'm Ms. Cat. I've been teaching for 25 years, 12 of which I was a reading and dyslexia specialist. I've been with Reynolds School District for almost 8 years. When I'm not teaching, I enjoy making, painting, and drawing things. I try to take stock in the simplest of things, not letting things pass me by. My husband of 25 years and I enjoy traveling and adventure, kayaking, hanging out with our friends and family, and playing with our cat, Juju.

## ERIN WILHELMS

Mrs. Wilhelms has been teaching in the Reynolds School District for 23 years. The first 14 were spent at Hartley Elementary in grades K-4. I have been at Salish Ponds for 9 years. The last 7 years have been in Kindergarten. I love the growth and all the firsts that happens during kindergarten. I am married to Bob and have a 17 year old son and 2 stepdaughters. I am also blessed to be a Meme to three beautiful grandchildren. We have 2 Boxers and a naughty little puppy.

## AIMEE SWORD

Hello! My name is Aimee Sword. I'm from Boise, Idaho. I moved to the Portland area in June of 2022. I graduated from Boise State University in 2018 with a degree in elementary education. I taught kindergarten for 3 years in Caldwell, Idaho before joining the Salish Ponds community. I love spending time with family, friends, and my pets! I have a dog named Nugget and a cat named Lorelei. In my free time, I enjoy reading, watching movies, and taking my dog on adventures.



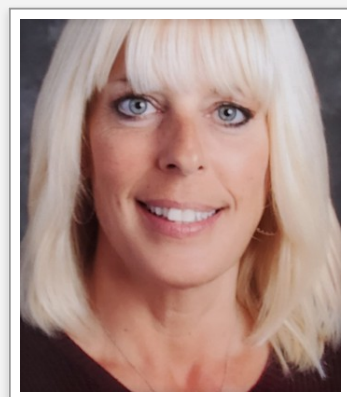
**CORRAUN BOURNE**

Librarian



**MERCEDES NARVAEZ**

Title I EA and Recess support



**BARB CLARK**

Title I EA and Recess support

## CORRAUN BOURNE

I am from Kalispell, Montana and a fifth generation Montanan. I have resided in Oregon since 1999. This is my 20th year in education, 19 of those years are with the Reynolds School District. Before becoming an elementary librarian, I was a middle school language arts and reading teacher. I have a new pup named Fern who is a rescue from Texas. I love to read, getting to know my students to help them find new and exciting books, and making art is a lifelong passion of mine.

## MERCEDES NARVAEZ

Hi there! My name is Mercedes Narvaez and this is my first year working at Salish Ponds as a noon assistant. I've grown up in the Wood Village community since 2012 when I moved here from Lubbock, Texas. I'm a former student of the Reynolds School District and current student at Portland Community College aiming towards a degree in education. On my days off you can find me trying out a new restaurant, sleeping (when I really should be working on my assignments) or playing with my dog Starbucks! What I love about the Salish Ponds community is the care and support they give to both their staff and students! As a former student, now staff member I can say that the support and encouragement I received both then and now has remained unchanged.

## BARB CLARK

I was born and raised in SE Portland. I have been married for 31 years and I have one son and one daughter. Both of them went to school in the RSD. I have worked at Salish Ponds for 15 years, mostly on the playground, but in other areas as well. What I love the most about Salish Ponds is our amazing, wonderful staff, and seeing all the love and care we give our students every day! I also love interacting with all of our students on the playground, it is so much fun and it brings me a lot of joy! In my free time I enjoy painting crafts. I also like collecting pretty rocks, especially agates, gardening in the summer and making homemade caramel.

## ATTENDANCE CELEBRATIONS!

Did you know that last year only 32% of students at Salish attended school regularly compared to 64% of students in the state? ***At this point in January, 47% of Salish students are "regular attenders," coming to school at least 90% of the time!*** This is an average of missing no more than two days per month. Regular attenders are more likely to be strong readers, graduate high school on time, and attend college! It helps students feel connected to their classroom and reduces anxiety of having to catch up.

Our January attendance was the best yet with 57% of students attending regularly during the month. ***Thank you so much for sending students to school consistently and on time!*** Students who are "regularly attenders" for each month and students who are improving their attendance will be recognized at our monthly assembly on Thursday 2/2 and awards sent home that day.

We understand there are times when students must miss school for illness and important family events. Thank you for your continued communication! If your family needs support to help students' motivation to be at school, problem solve transportation issues, or anything else, please contact your scholar's teacher, our school counselors (Ms. Delos Reyes in K-2 and Ms. Rose in 3-5), or our school's social worker (Ms. Ahina).

## **ARRIVAL AND DISMISSAL/ SAFETY CONCERNS**

Your patience at arrival and dismissal keeps our kids safe and the traffic moving! Thank you for driving with slow speeds, using our designated drop off areas, and for always checking with the adult on duty before leaving with your child.

**Safety Concerns** We need your help to ensure everyone's safety so we can avoid potentially dangerous situations for our students as they are getting dropped off to / picked up from school:

- Please do not drive around/over/through the orange cones - they are there to help traffic patterns and ensure your vehicle, your students and our staff remain safe!
- Park in the center parking lot *only* if you need to go into the building.
- Drive slowly and be considerate of drivers backing out of parking spots
- Allow students to get into/exit vehicles on curb side only
- Keep students buckled-up until vehicle is at a full stop
- Call the school if your student will be going home with a different person or in a different way

**"Pro Tips"** Here are some ideas for these times of the day that might benefit your family and help make our processes more efficient:

- We do not release students until 3:20pm and the pick-up line is complete in less than 15 minutes. Arriving early to line up in the car pick up lane doesn't always mean a faster pick up!
- If you consistently pick up your student in different cars or by different people, ask the teacher for another dashboard name sign so your pickup person will not need to be verified
- Park at the middle school north lot and walk to drop off/pick up your student! This could be a great time to talk and connect with your scholars without distractions (not to mention exercise a bit!).

*This is a process we continually strive to make better and faster for you! Let us know if you have ideas!*

## UPCOMING EVENTS IN FEBRUARY!

- 2nd: 3rd- 5th Assembly at 11:10-11:40, and K-2nd Assembly at 12:30-1pm. Please let your scholar's teacher know if you are coming, so we can set up additional chairs.
- 3rd: Report cards sent home in the mail
- 3rd: Dash Cash Spirit Day!
- 6th- 10th: School Counseling Week
- 13th: ELPA Testing begins
- 14th: Friendship Day
- 15th: Exclusion Day (see above for details)
- 20th: Presidents Day
- 23rd: School Bus Driver Appreciation Day
- 23rd: Family Engagement Night:



## WE ARE THE SALISH PONDS DRAGONFLIES!

 1210 Northeast 201st Avenue, ...  (503) 492-7260

 [reynolds.k12.or.us/salish](https://reynolds.k12.or.us/salish)