



# Starting Points

What matters to you most?

Name: \_\_\_\_\_

# Introducing Values: What matters to you?

You will view a set of values, or words that represent principles and beliefs that are important to people your age (and people at every age!).

As you view or cut each of the cards, think about what the word means to you.

# Value Cards



Cut out the value cards below.



**Honesty**

matters to me

Amplify.



**Courage**

matters to me



**Creativity**

matters to me

Amplify.



**Hard work**

matters to me

Amplify.

# Value Cards



Cut out the value cards below.



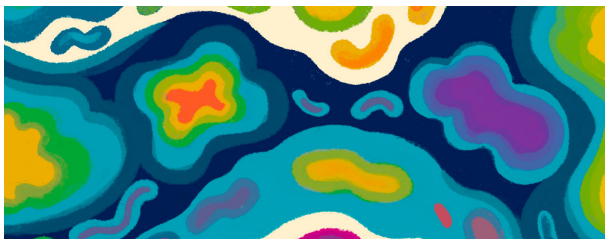
**Learning**  
matters to me

Amplify.



**Friendship**  
matters to me

Amplify.



**Laughter**  
matters to me

Amplify.



**Athleticism**  
matters to me

Amplify.

# Value Cards



Cut out the value cards below.



**Family**

matters to me

Amplify.



**Independence**

matters to me

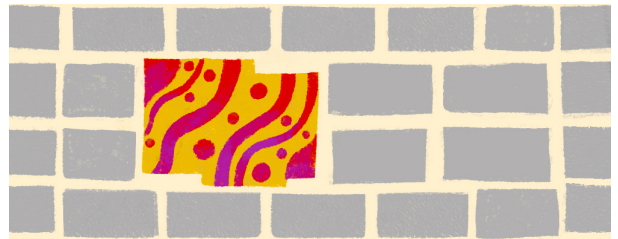
Amplify.



**Truth**

matters to me

Amplify.



**Originality**

matters to me

Amplify.

# Value Cards



Cut out the value cards below.



## Revolution

matters to me

Amplify.



## Pride

matters to me

Amplify.



## Community

matters to me

Amplify.



## Individuality

matters to me

Amplify.



# Value Cards



Cut out the value cards below.



**Kindness**

matters to me

Amplify.



**Compassion**

matters to me

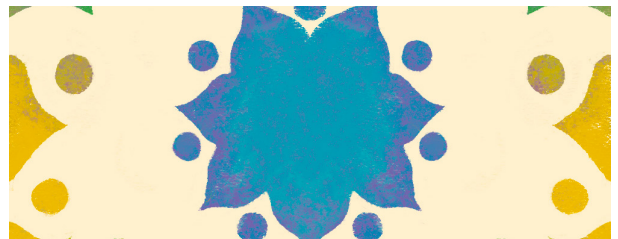
Amplify.



**History**

matters to me

Amplify.



**Faith**

matters to me

Amplify.

# Value Cards



Cut out the value cards below.



**Style**

matters to me

Amplify.



---

matters to me

Amplify.



---

matters to me

Amplify.



---

matters to me

Amplify.



Name: \_\_\_\_\_

## Let's sort them!

Now that you've started to think about what matters to you, you're ready to start sorting your own set of Value Cards. If you don't see a particular value that matters to you, feel free to write it on one of the blank cards.

Then, sort each card into 1 of 4 categories:

**Most Important**

**Really Important**

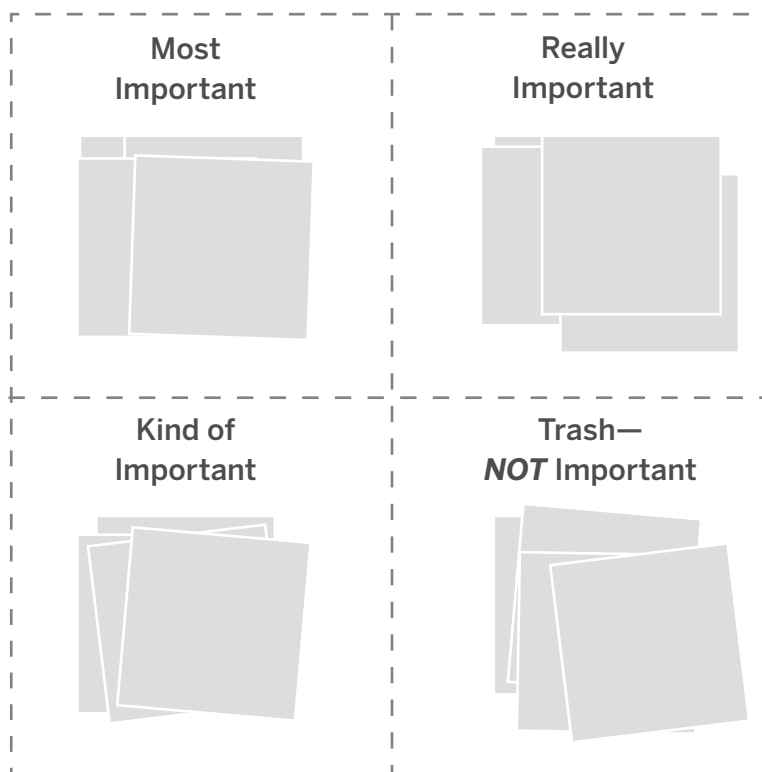
**Kind of Important**

**Trash—not important**

Keep in mind, there are no right or wrong answers here. In fact, the same person might sort their values differently at different moments in their life. Your ranking list continues to change and evolve over time—as you do, too!

Keep going until all your cards have been sorted.

**Example:**



Name: \_\_\_\_\_

Let's sort them! (continued)

<b>Most Important</b>	<b>Really Important</b>
<b>Kind of Important</b>	<b>Trash— <i>NOT</i> Important</b>

Name: \_\_\_\_\_

## Now we rank!

Be sure your Most Important section contains at least 1 Value Card and no more than 4 value cards. The other sections can have as many or as few cards as you like.

Add those below.

A blank sheet of graph paper featuring a uniform grid of dashed lines. The grid consists of 10 columns and 8 rows of squares, creating a total of 80 square units. The lines are evenly spaced and extend across the entire page, leaving small margins at the top, bottom, left, and right edges.

Name: \_\_\_\_\_

## Let's make some meaning!

Great! Your next step is to find or make something that shows what your **most important** values mean to you.

This is your chance to let your imagination run wild: tell a story, draw a picture, copy a meme you find online, write the lyrics to a song, make a collage... the sky's the limit!

See some student samples below.

### Sample Responses:

Here's a collage that shows what creativity means to me.



Here's a rap that shows what family means to me.

she puts on the mask in the dark every morning  
while I sleep, sound and deep, out the door long before any of us  
are awake. I can't take the suspense  
cuz I reckon any second, it could break her, and then  
I tell all my friends I can fend for myself  
but I'm scared cuz she there, she defending our health  
she ain't try to be a hero, never flaunt that she brave  
don't matter what she ask for, she want to get paid  
a sign in the window that says, "thanks to the frontline"  
a sign ain't finna pay the bank or the lunch line  
wanna see some honesty? then I'll be blunt, fine:  
reopening's a joke, and her safety's the punchline  
in face of infection, for me I'll be fearless  
but that's not protecting the people I'm nearest  
I don't know who's listening, who needs most to hear this:  
you could have stopped it—don't wonder why we're pissed

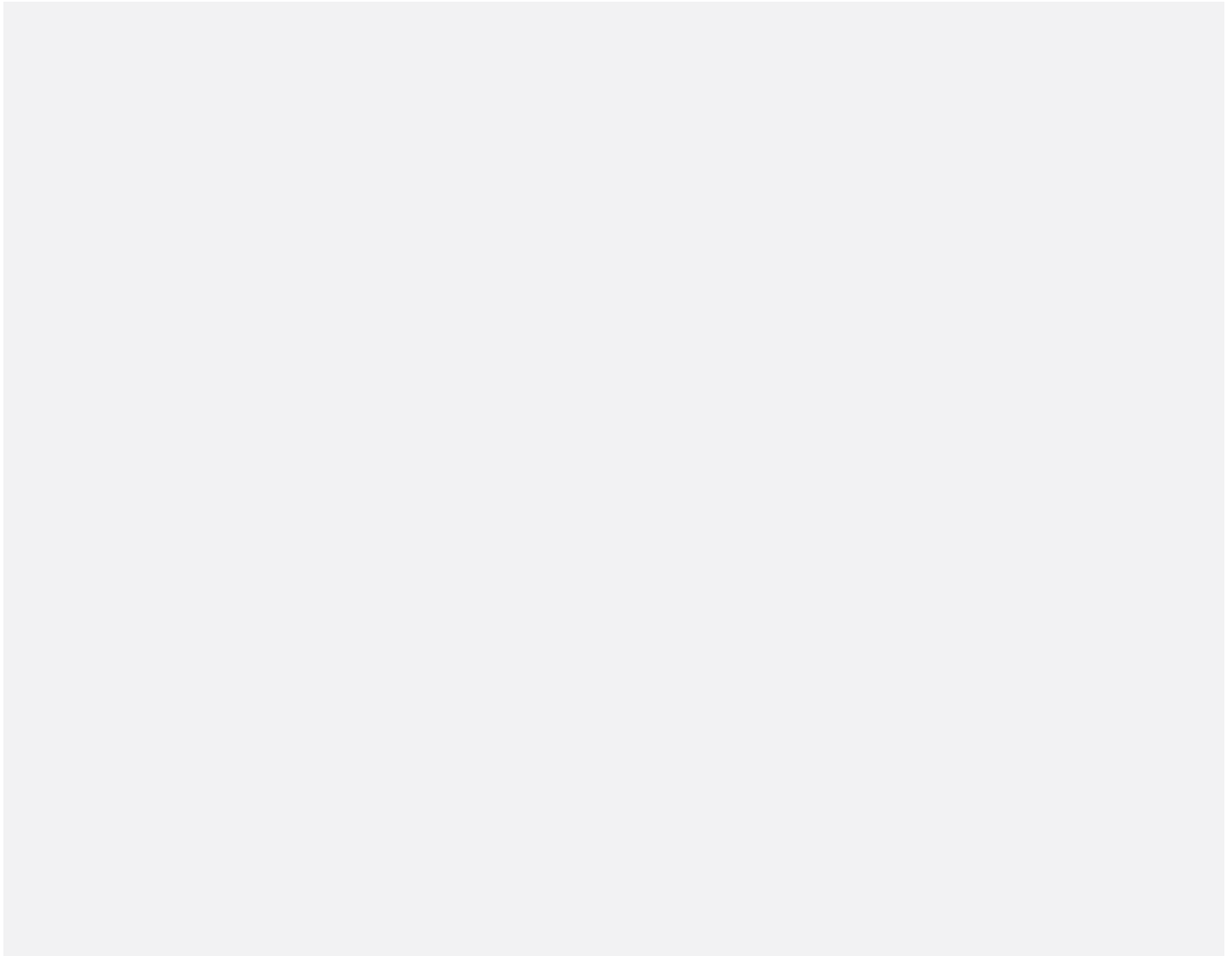
Name: \_\_\_\_\_

## Let's make some meaning! (continued)

Choose 1 of your **Most Important** values and use the space in the box below to show us what it means to you. Remember, anything goes!

Here's a \_\_\_\_\_ that shows what

\_\_\_\_\_ means to me.



Name: \_\_\_\_\_

## Now tell us about you!

In one paragraph, tell us about a time when you acted on this value.

**Need help? Try thinking about:  
How did it feel to be able to  
express your values? How  
did others react? What did  
you learn about yourself?**

[illegible]



Name: \_\_\_\_\_

## Now tell us about you!

In one paragraph, tell us about a time when you acted on this value.

**Need help? Try thinking about:  
How did it feel to be able to  
express your values? How  
did others react? What did  
you learn about yourself?**

[illegible]