

Concept Site Plan – New Wilsonville MS

Landuse

Stage I Approval - September 10, 2015

Right-of-way Discussions

Neighbor meetings

Site Investigation

Soils Report

Wetland Report

Traffic Study

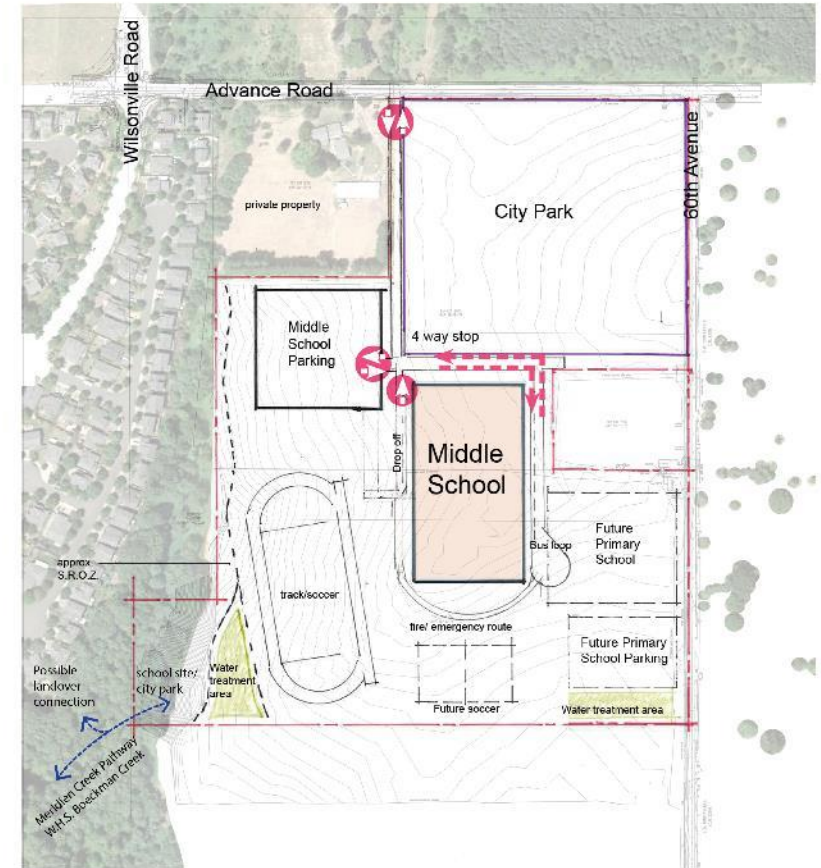
Safety & Security Analysis

Educational Planning

Meetings with District Staff &

Ed Spec Committee to

refine design



scale: 1"=200'-0" (11x17 full size)
50 0 100 200 300

Stage I

Advance Road School/Park Site
Master Plan

West-Linn - Wilsonville School District
City of Wilsonville

07.15.2015

Area of Building	Base Bid	Alternate
Administration	2,850 sf	2,850 sf
Counseling	525 sf	525 sf
Academic (Classrooms)	23,775 sf	34,575 sf
Research & Inquiry	5,250 sf	5,250 sf
Related Arts & Maker	6,360 sf	8,715 sf
Athletics	10,300 sf	17,000 sf
Food Services	8,520 sf	8,520 sf
<u>Building Support</u>	<u>2,325 sf</u>	<u>2,325 sf</u>
Net Area	59,905 sf 475 students	79,760 sf 700 students
Total Gross Area	72,815 sf	96,948 sf
<i>Average MS Gross Area</i>		<i>95,068 sf</i>



Add Alternate # 02:
8 added classrooms
1 added science

Add Alternate # 02:
8 added classrooms
1 added science

Add Alternate # 03:
Gym (auxiliary)



View at Main Entry





View at Main Entry



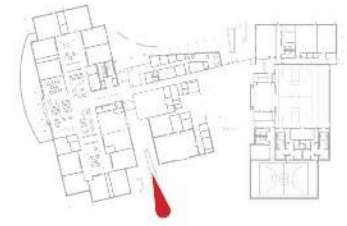


View at Student Commons





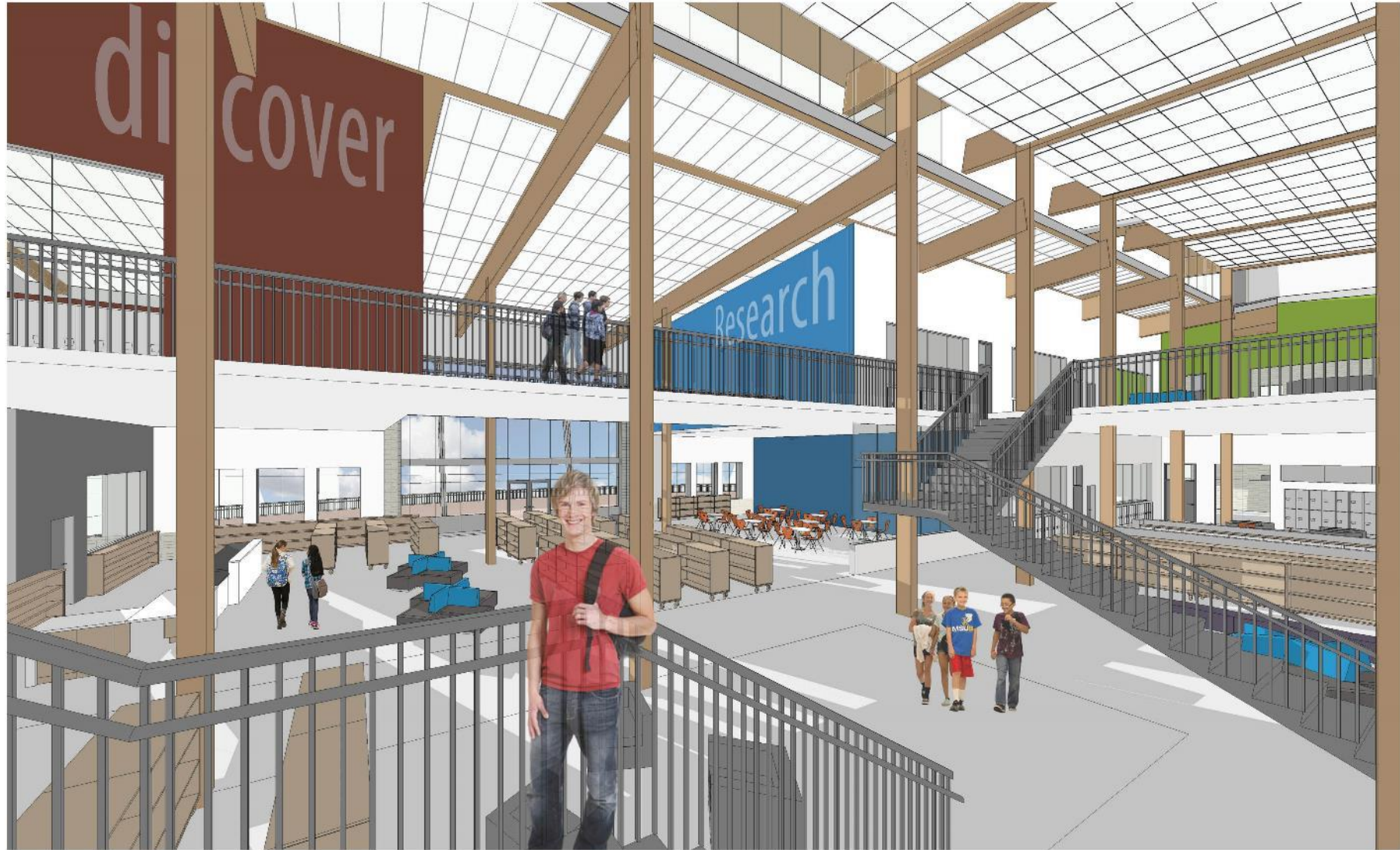
View at Student Bus Drop-off



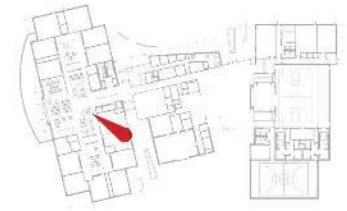


View at Research and Inquiry



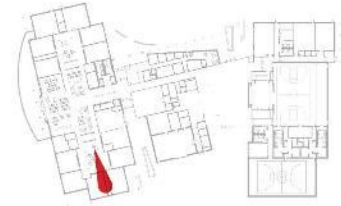


View into R+I



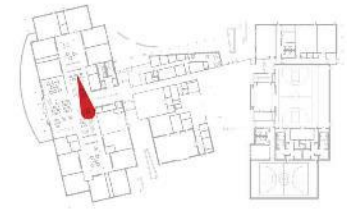


View from Student Porch at 2nd floor into R+I





View to Student Porch at 2nd floor





View into Student Commons





view into Main Gym with spectator seating

