




Wilkes Elementary
Construction Area – Facing North
5/15/2017

An aerial photograph showing Wilkes Elementary school and its surroundings. The school is a large, white, single-story building with a dark roof, located in the lower right. To its left is a playground with a colorful structure. Further back is a large, brown, rectangular field, likely a sports field, with some construction equipment visible. To the left of the field is a parking lot filled with many white delivery trucks, some labeled 'Safeway' and 'Albertsons'. The area is bordered by a green lawn and trees. In the background, there are residential houses and a street.

Wilkes Elementary
Aerial View - Facing South
5/26/2017



Wilkes Elementary
Construction Area – Facing West
6/5/2017



Wilkes Elementary
Construction Area – Facing Northeast
6/15/2017

A wide-angle photograph of a construction site for Wilkes Elementary. In the foreground, a rectangular concrete foundation is being prepared, with wooden forms and rebar visible. The ground is covered in grey gravel. In the middle ground, several workers in orange safety gear are working on the site. A yellow excavator and a white truck are parked near a large pile of dirt. In the background, a long, single-story white building with blue trim and windows is visible, surrounded by trees. The sky is blue with scattered white clouds.

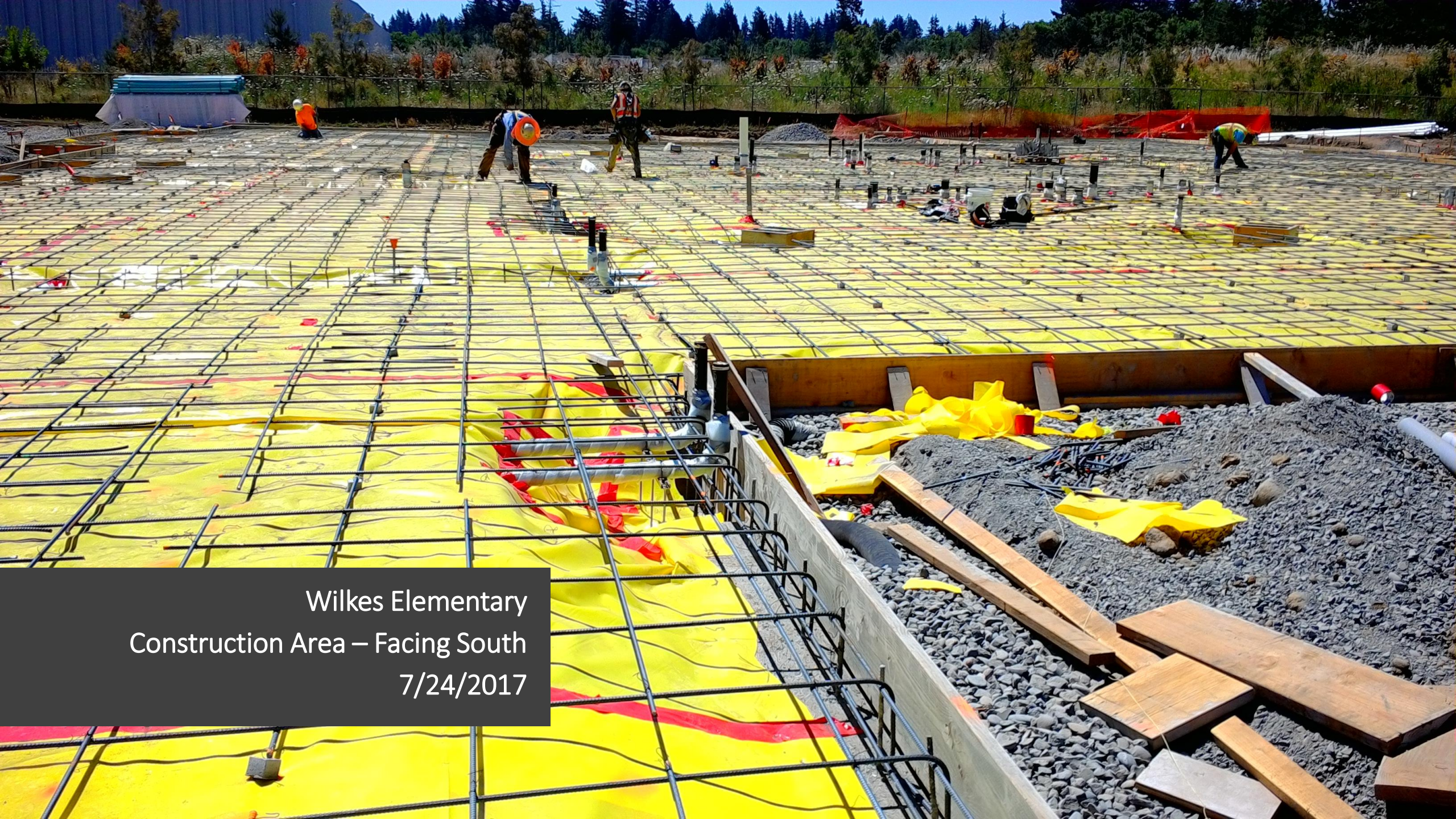
Wilkes Elementary
Construction Area – Facing North
6/21/2017



Wilkes Elementary
Construction Area – Facing Northwest
7/5/2017



Wilkes Elementary
Construction Area – Facing North
7/12/2017



Wilkes Elementary
Construction Area – Facing South
7/24/2017



Wilkes Elementary
Construction Area – Facing North
8/2/2017



Wilkes Elementary
Construction Area – Facing Southeast
8/9/2017