

The following pages show the draft schematic designs for Wilkes Elementary.

Wilkes Elementary School is being replaced with a new school on the same site. The new Wilkes Elementary School is designed to connect students with the natural world through form, light and color. Located on the edge of an industrial zone, immediately adjacent to Interstate 84 and within the flight path of Portland International Airport, the school's exterior environment is permeated by the sights and sounds of an urban, built environment. The replacement design introduces elements that invoke the natural world and the beauty of the forest landscape. Vertical patterns created by exterior finishes echo the silhouette of majestic Pacific Northwest forests, while windows create open spaces through which light filters patterns onto interior walls. The site's blend of deciduous and coniferous trees offers natural vistas from interior spaces, and adds the character of the light, play of shadow and unique color of the changing seasons as a complement to the building's design.



INSPIRATIONAL IMAGES



OFF-STREET PARKING TABULATIONS

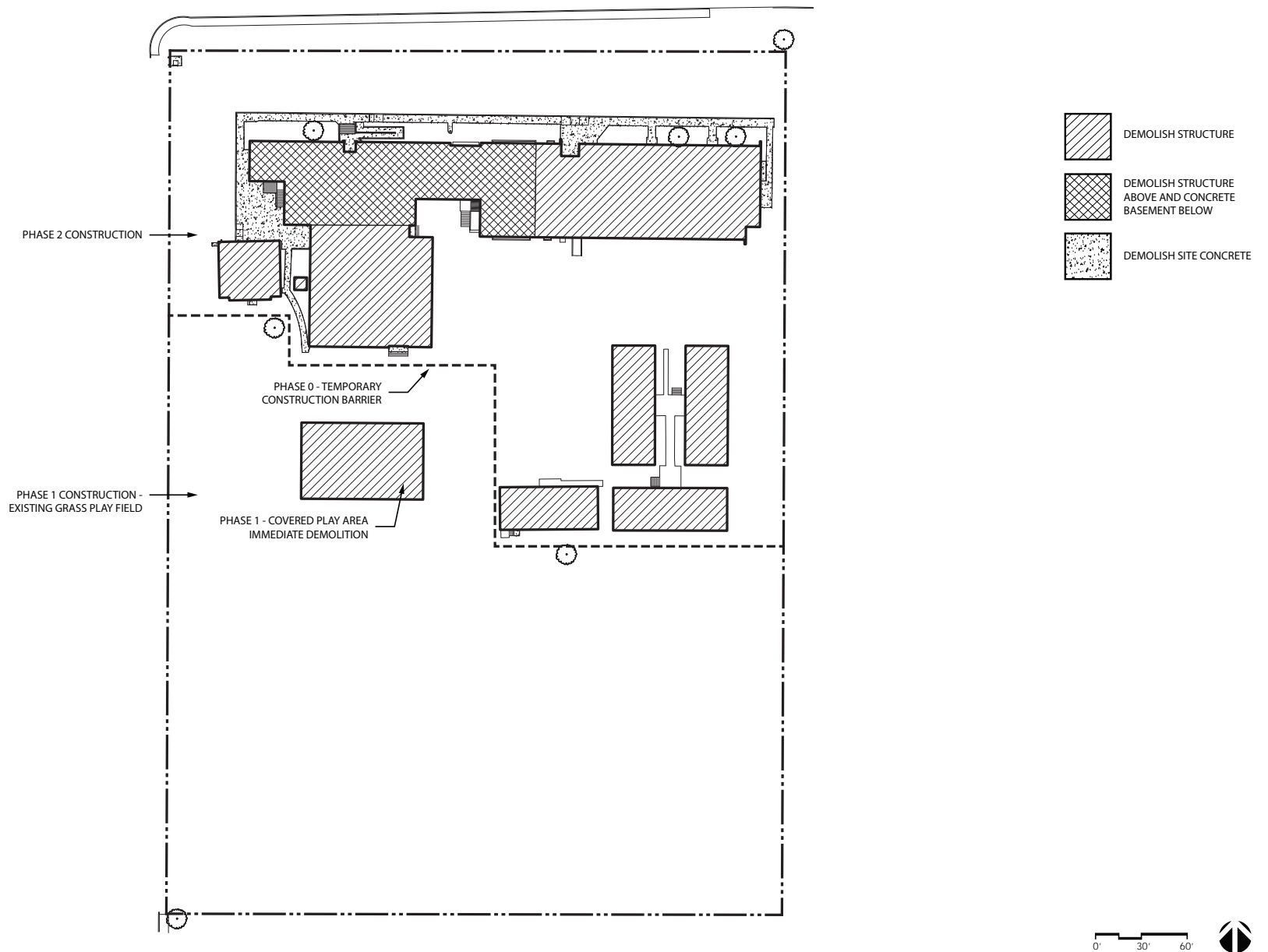
PERMANENT PARKING: 70 SPACES
 PARENT LOADING: 13 SPACES
 DAYCARE VANS: 7 SPACES
 BIKE PARKING: 16 SPACES

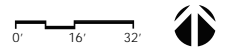
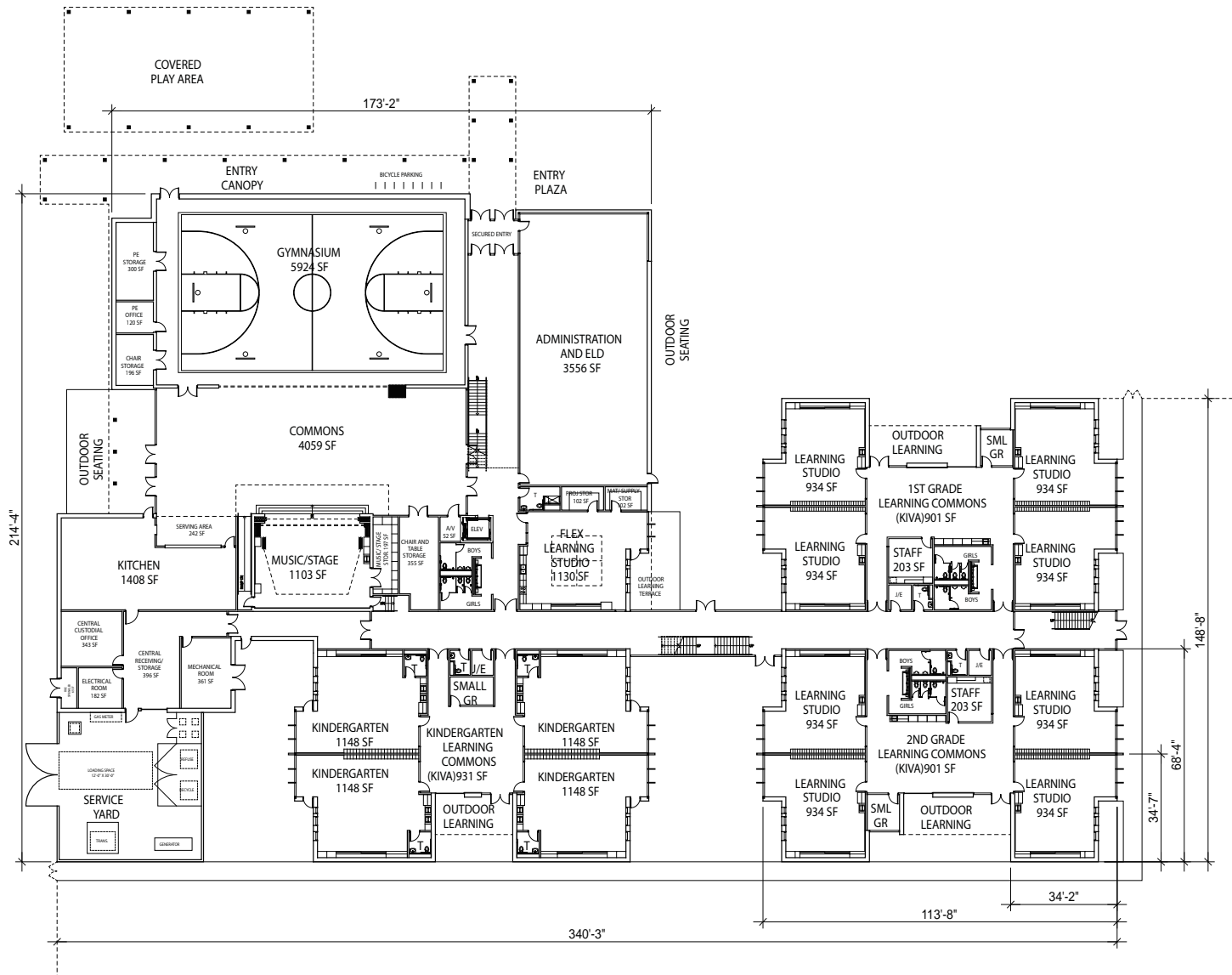
LEGEND

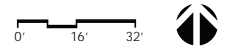
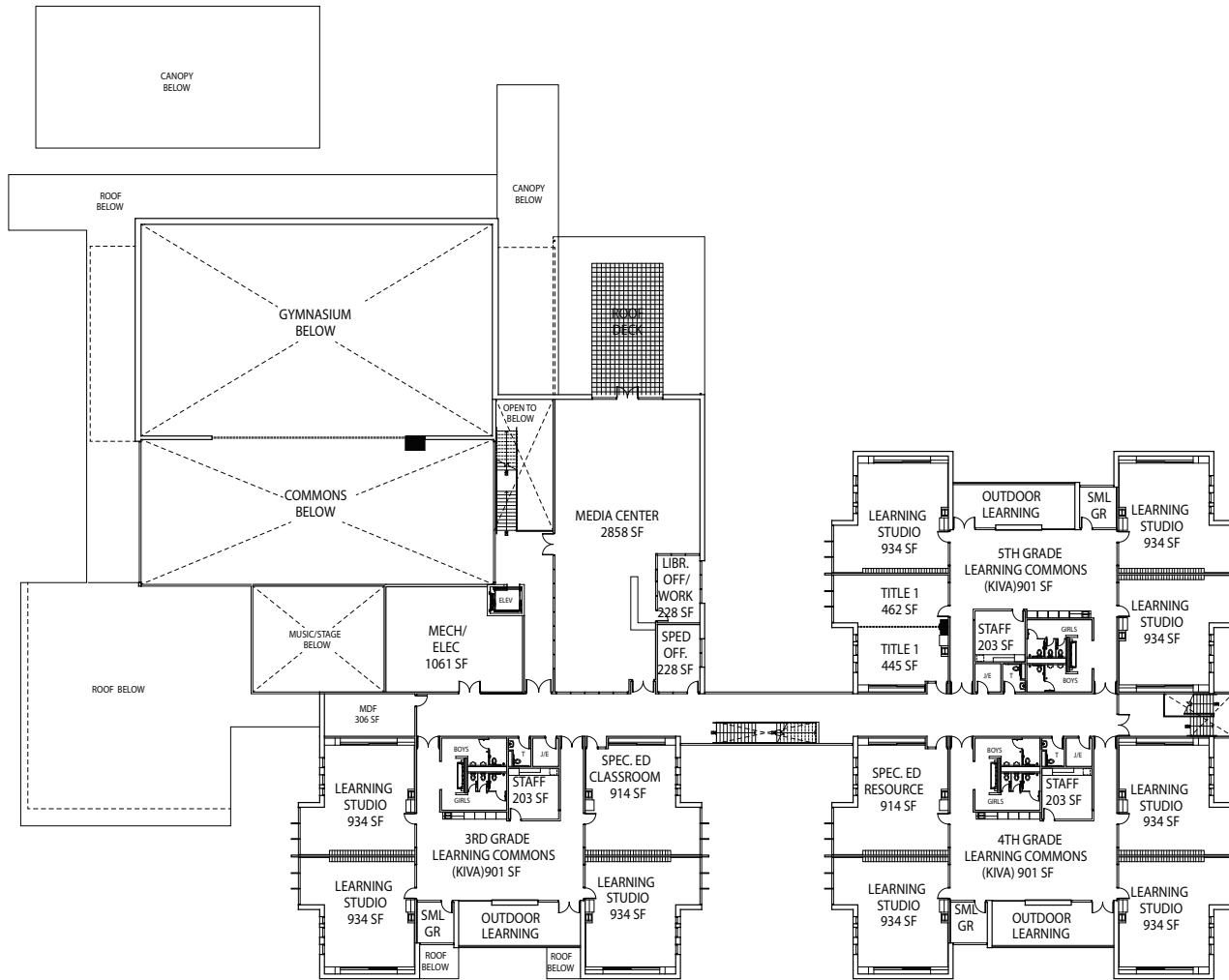


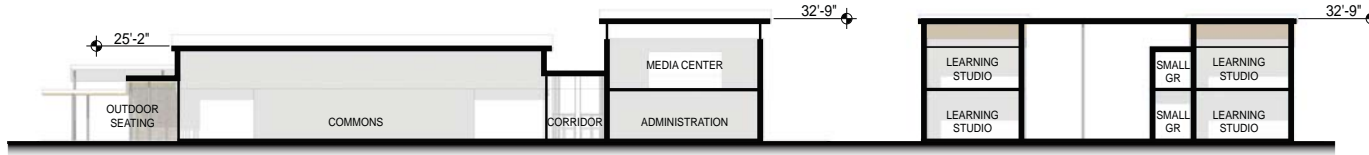
0' 30' 60'



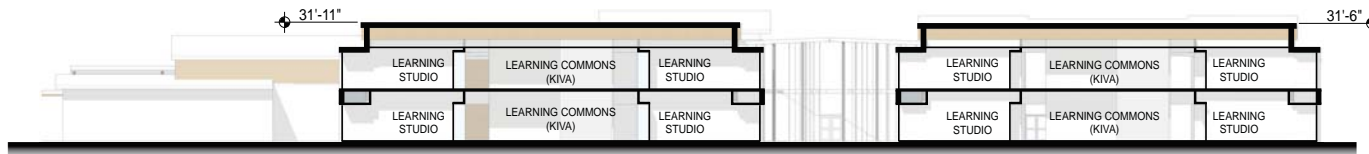




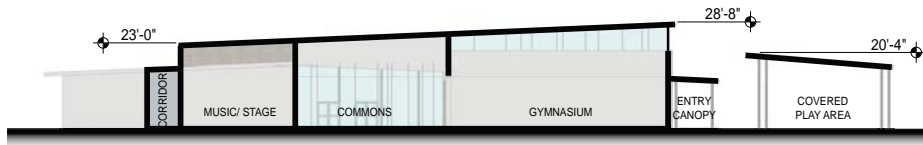




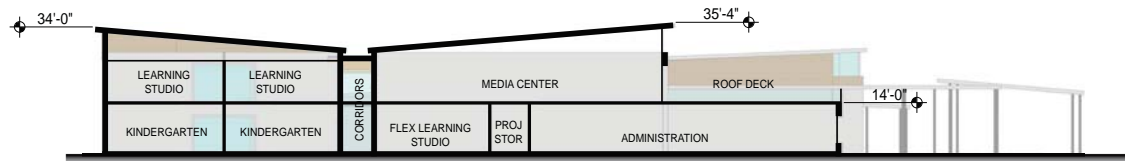
North Section 1



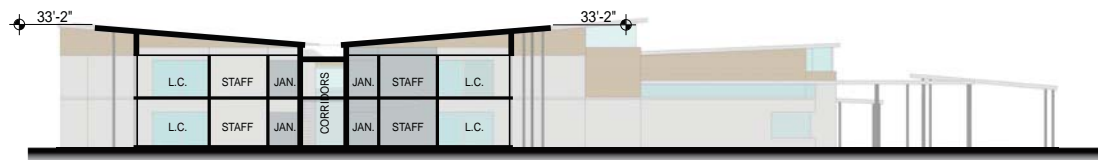
North Section 2



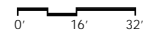
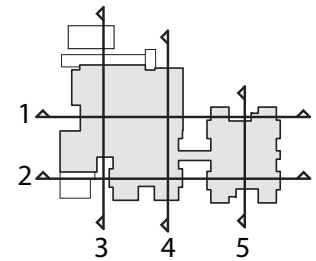
West Section 3



West Section 4



West Section 5



Exterior Wall Assemblies

Brick

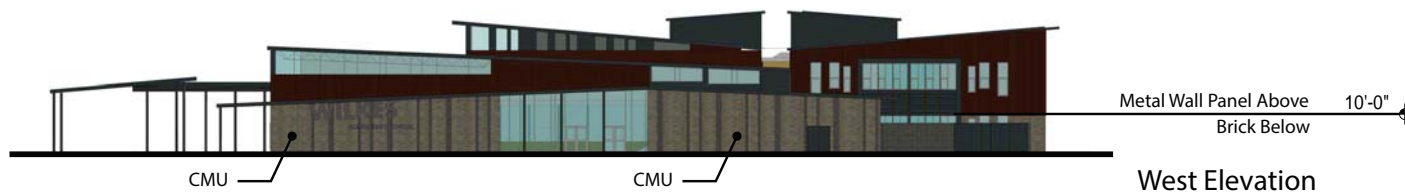
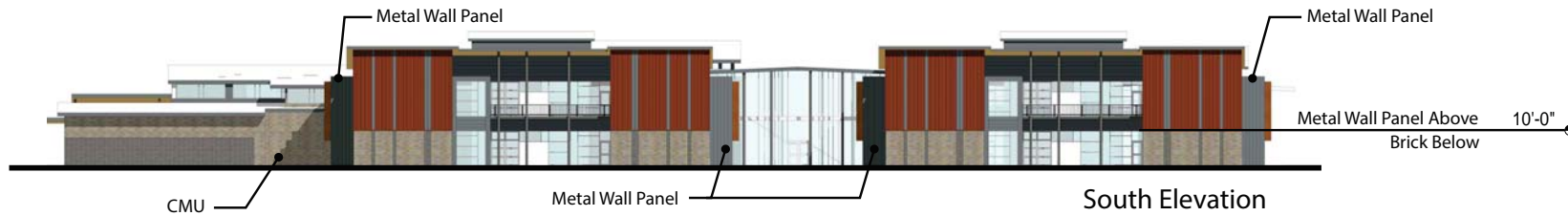
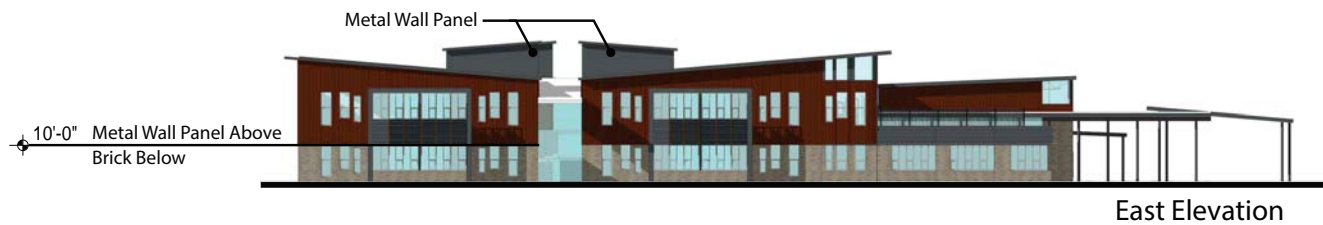
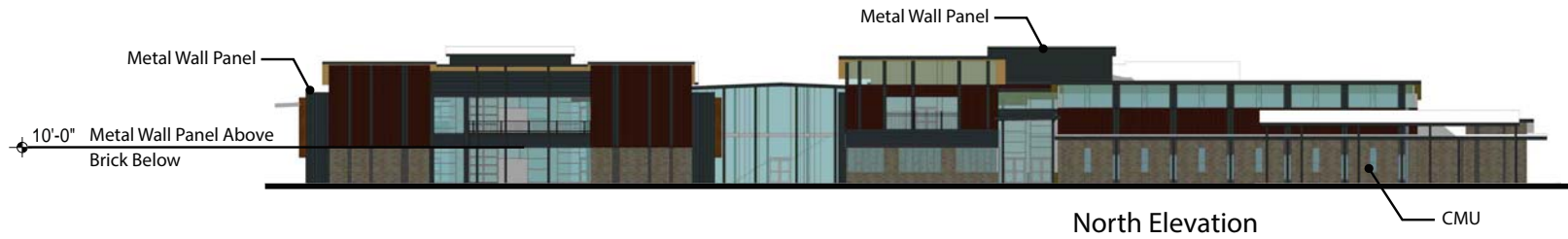
- Gypsum Board
- Metal Stud Framing
- Blanket Insulation R13
- Sheathing
- Rigid Insulation R7.5
- Ties/ Anchors
- Brick/ Masonry Veneer

CMU

- 12" Concrete Masonry Units
- Rigid Insulation R11.4
- Ties/ Anchors
- Brick Masonry Veneer

Metal Wall Panels

- Gypsum Board
- Metal Stud Framing
- Blanket Insulation R13
- Sheathing
- Rigid Insulation R7.5
- Metal Furring System
- 12"W Metal Wall Panels



0' 16' 32'