

The following pages show the draft schematic designs for Troutdale Elementary.

Community connection with the natural beauty of the Columbia Gorge and Sandy River served as the design inspiration for Troutdale Elementary School's replacement. The site design references the place where the water and land intersect, with curvilinear landscape lines evoking the broad arc of the shore. Rooflines of the covered play area, entry canopy and commons were inspired by gentle waves of water, and the subtle differences in height of the bottom window sills provide a sense of motion. Existing trees on site will be preserved and serve as a natural backdrop to the school, just as the trees at Glenn Otto Park do for the Sandy River.

INSPIRATIONAL IMAGES



OFF-STREET PARKING TABULATIONS

PERMANENT PARKING: 67 SPACES
PARENT LOADING: 16 SPACES
BIKE PARKING: 16 SPACES

LEGEND

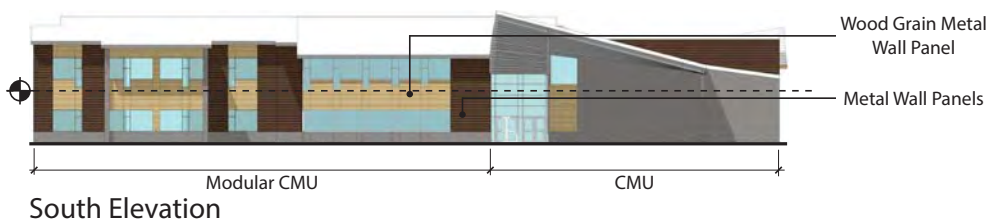
- PROPERTY LINE
- - - SETBACK
- - - PROPOSED FENCE
- - - EXISTING FENCE
- SCHOOL BUS
- PARENT VEHICLE
- SPED BUS
- ASPHALT PAVING
4" AC over 10" of base course.
See Civil.
- CONCRETE PAVING
4" over 4" of base course.
See Civil.
- SPECIAL PAVING AREAS
- VEHICLE LOADED CONCRETE PAVING
6" of concrete over 6" of base course.
See Civil.
- SOFT PLAY AREA
- PLANT BED/LAWN
- STORMWATER TREATMENT AREA
- PROPOSED TREES
- EXISTING TREE
- BOULDERS SET IN CONCRETE PAVING
- STEPPING STONE PATH
- DETECTABLE PAVING
- BIKE PARKING

0' 40' 80'









Exterior Wall Assemblies

Modular CMU

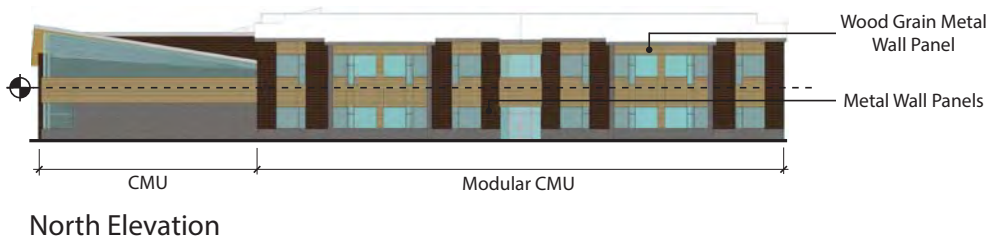
- Gypsum Board
- Wood Stud Framing
- Blanket Insulation R13
- Sheathing
- Rigid Insulation R7.5
- Ties/Anchors
- Masonry Veneer

CMU

- 12" Concrete Masonry Units
- Rigid Insulation R11.4
- Ties/Anchors
- Masonry Veneer

Metal Wall Panels

- Gypsum Board
- Wood Stud Framing
- Blanket Insulation R13
- Sheathing
- Rigid Insulation R7.5
- Metal Furring System
- 12"W Metal Wall Panels
- Wood Grain Panel by Longboard

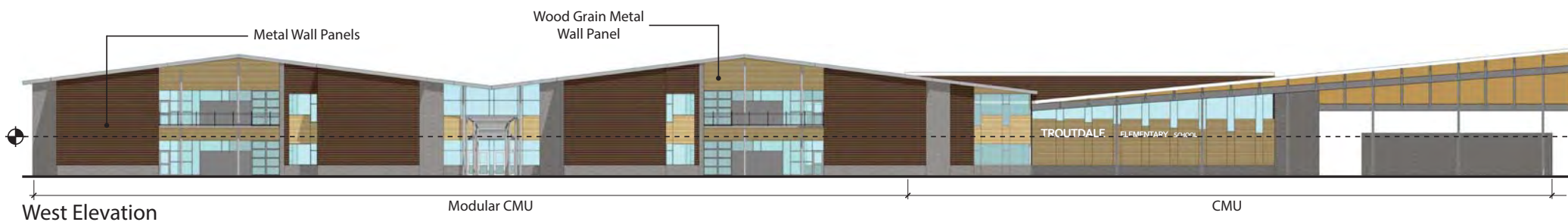
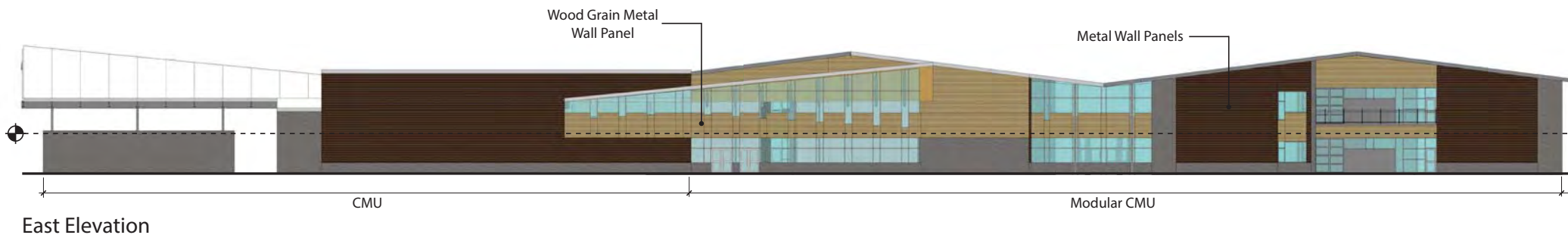


Building Height

34'-3 1/2"

2nd Floor Height

14'-0"



0' 16' 32'