

BREMIK CONSTRUCTION

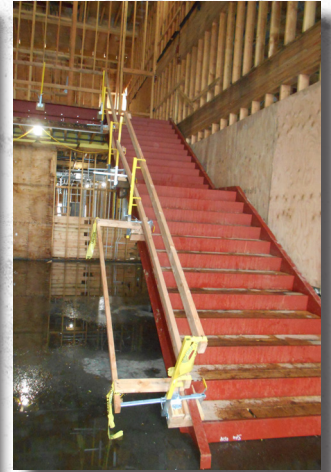
TROUTDALE ELEMENTARY CONSTRUCTION UPDATE

MARCH/APRIL 2018

Hooray, it's finally Spring! We hope you enjoyed your time off for Spring Break.

Our team has been very busy at your new school! Staircases have been installed in the entry corridor, in the breezeway, and in area 3 classrooms. **Fun Fact:** Did you know that each of these steel staircases weighs around 12,000 pounds?!

Roof top curbs have been set and the passive air shaft units have been installed. The curbs are for the HVAC equipment that supply the air and heat into the building.

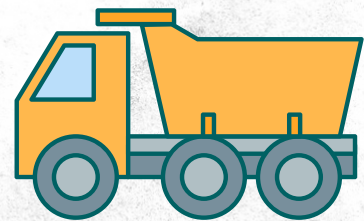
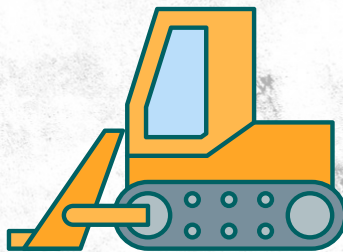
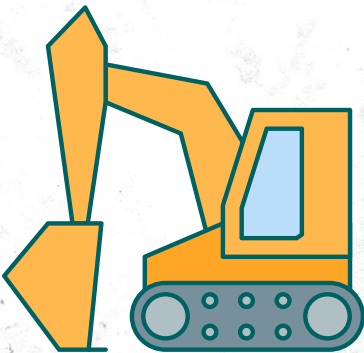
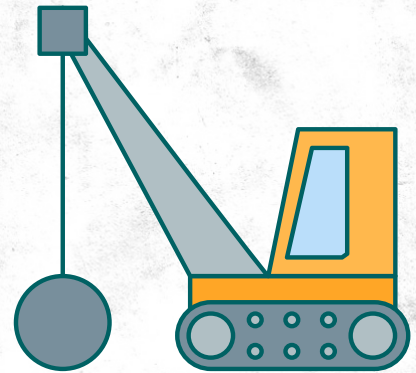
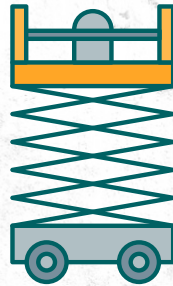
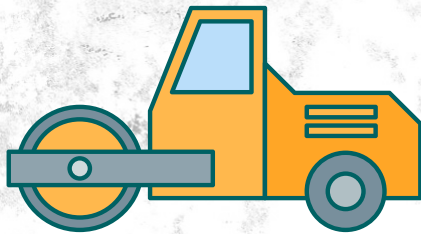


Windows and door frames are being installed throughout the building. On the exterior, the block and wood siding are continuing to go up, giving the new school its final look. Additional work on the interior includes running electrical wires, insulating ductwork, and installing insulation and sheetrock in the classrooms of area 3.

A lot of progress will continue to be made in both the interior and exterior of the school. On most days we have around 85 people on site working on finishing up your new school! We can't wait for you to see it once it's complete.



MATCH THE EQUIPMENT WITH ITS NAME!



Dump Truck

Excavator

Skid Steer Loader

Scissor Lift

Hydromobile Crane

Roller