

Reynolds School District

TROUTDALE ELEMENTARY SCHOOL

Community Design Workshop No. 2

May 31, 2016

BLRB architects



agenda

Welcome

Overview of May 17th Meeting

- Guiding Principles
- Program Overview
- Design Exploration
 - Puzzle Piece Exercise

Concept Design

- Feedback and Discussion

What Makes Troutdale...Troutdale

Next Steps

A G E N D A

overview



**LOOKING
BACK...**

May 17th Meeting

guiding principles of design



Reynolds School District
new elementary schools



Student Capacity

- Current enrollment 430 Students
- Planned average capacity 546 Students

Building Square Footage

- Planned 71,600 Square Feet
- Existing 54,883 Square Feet

Learning Environment

- (4) Kindergarten Classrooms
- (8) 1st and 2nd Grade Classrooms
- (9) 3rd – 5th Grade Classrooms
- (1) Special Ed Classroom
- (1) Special Ed Resource Classroom
- (2) Title I Classrooms
- (1) Music Classroom
- (1) Flex/Projects Classroom

**Classrooms will be organized into Small Learning Communities*

Support Facilities

- Library
- Gymnasium
- Commons/Cafeteria
- School Office and Student Services
- Maintenance, Service, and Custodial

New Troutdale Program Overview

committee activity



Design Exploration | May 17, 2016

committee activity



Design Exploration | May 17, 2016

committee activity



Design Exploration | May 17, 2016

committee activity



Design Exploration | May 17, 2016

committee activity



Design Exploration | May 17, 2016



Scheme '1'

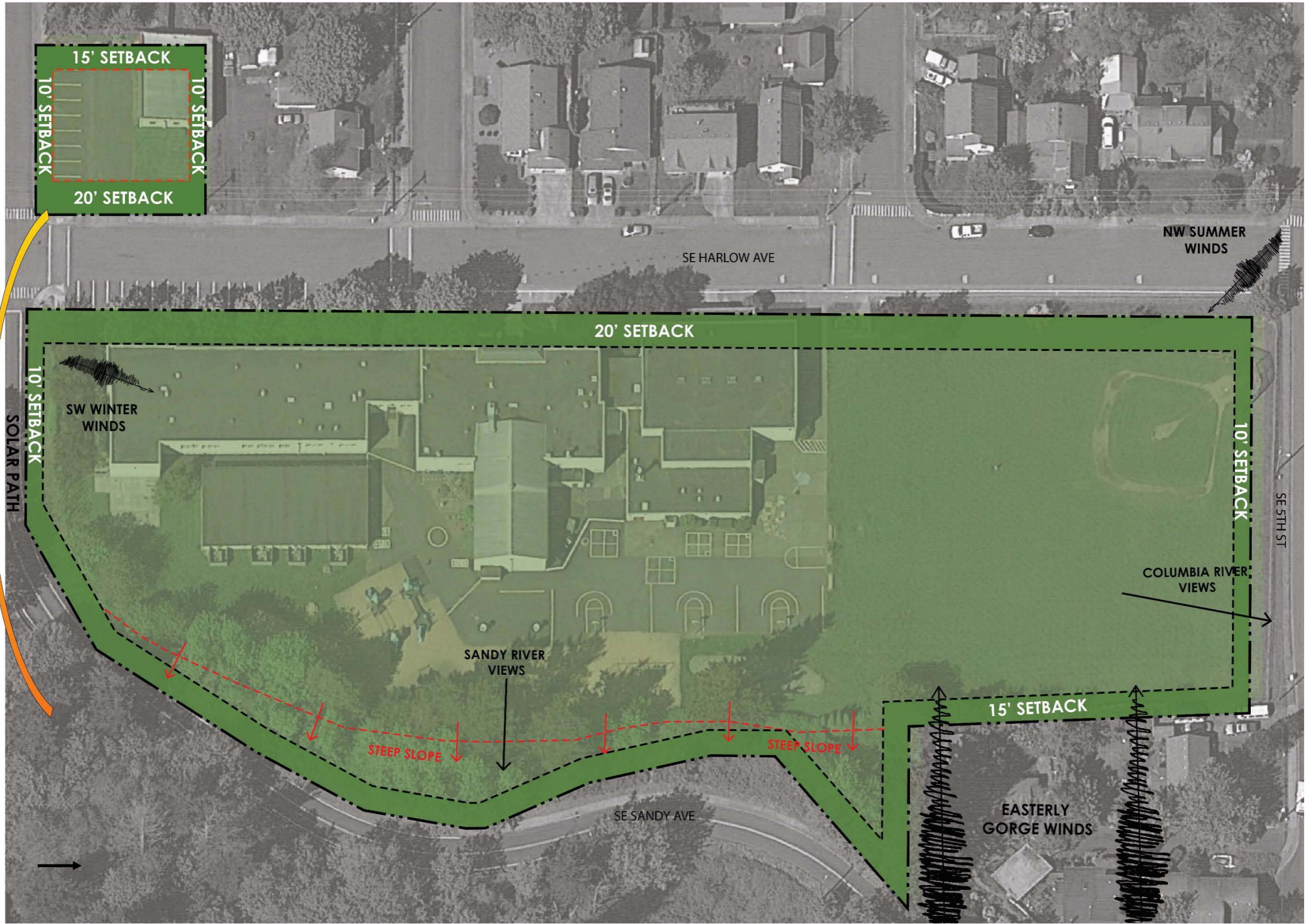


Scheme '1' | Preferred Scheme

concept design



Feedback and Discussion



Site Analysis







Site Plan



First Floor Plan



Second Floor Plan





Entry view Harlow & 8th



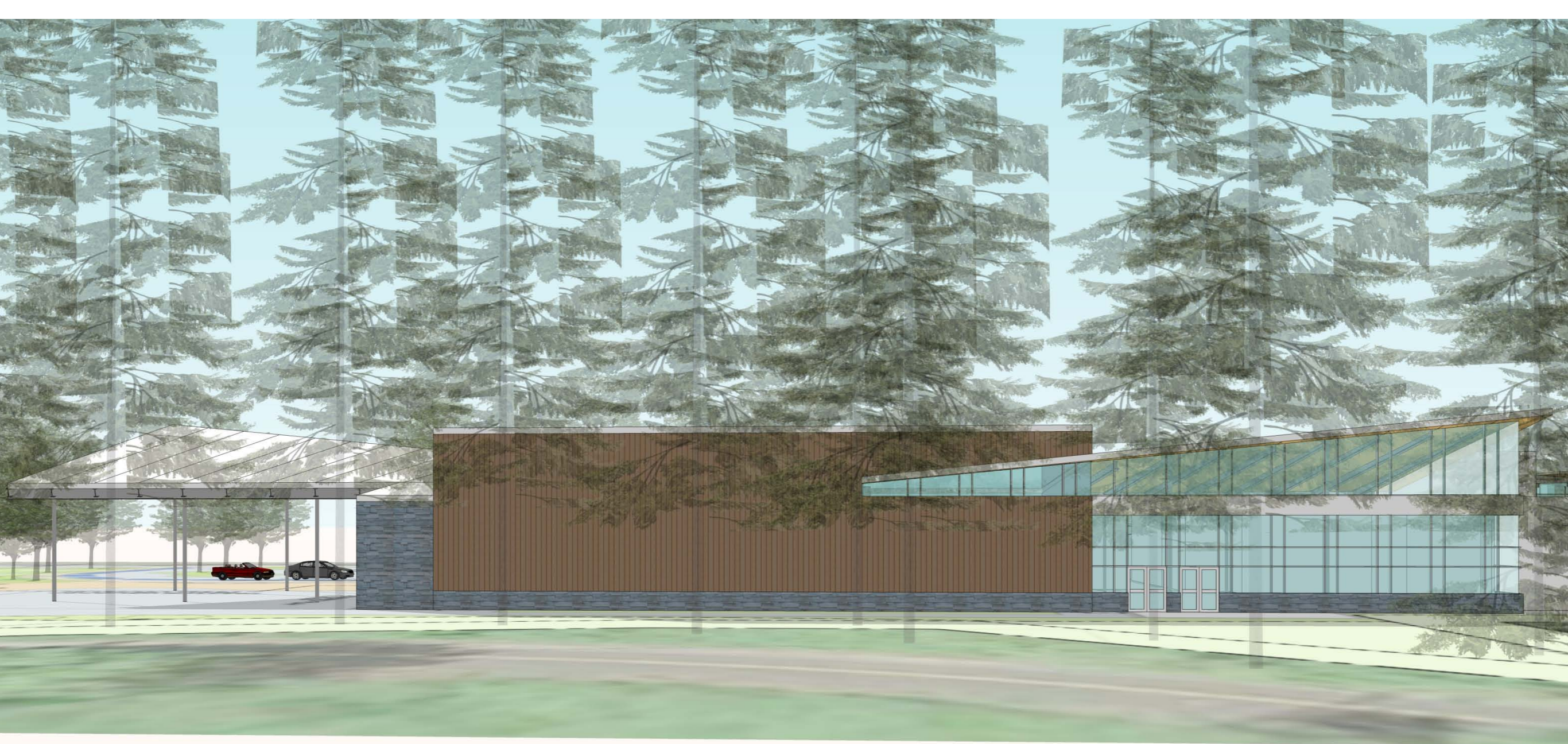
View of entry from 6th



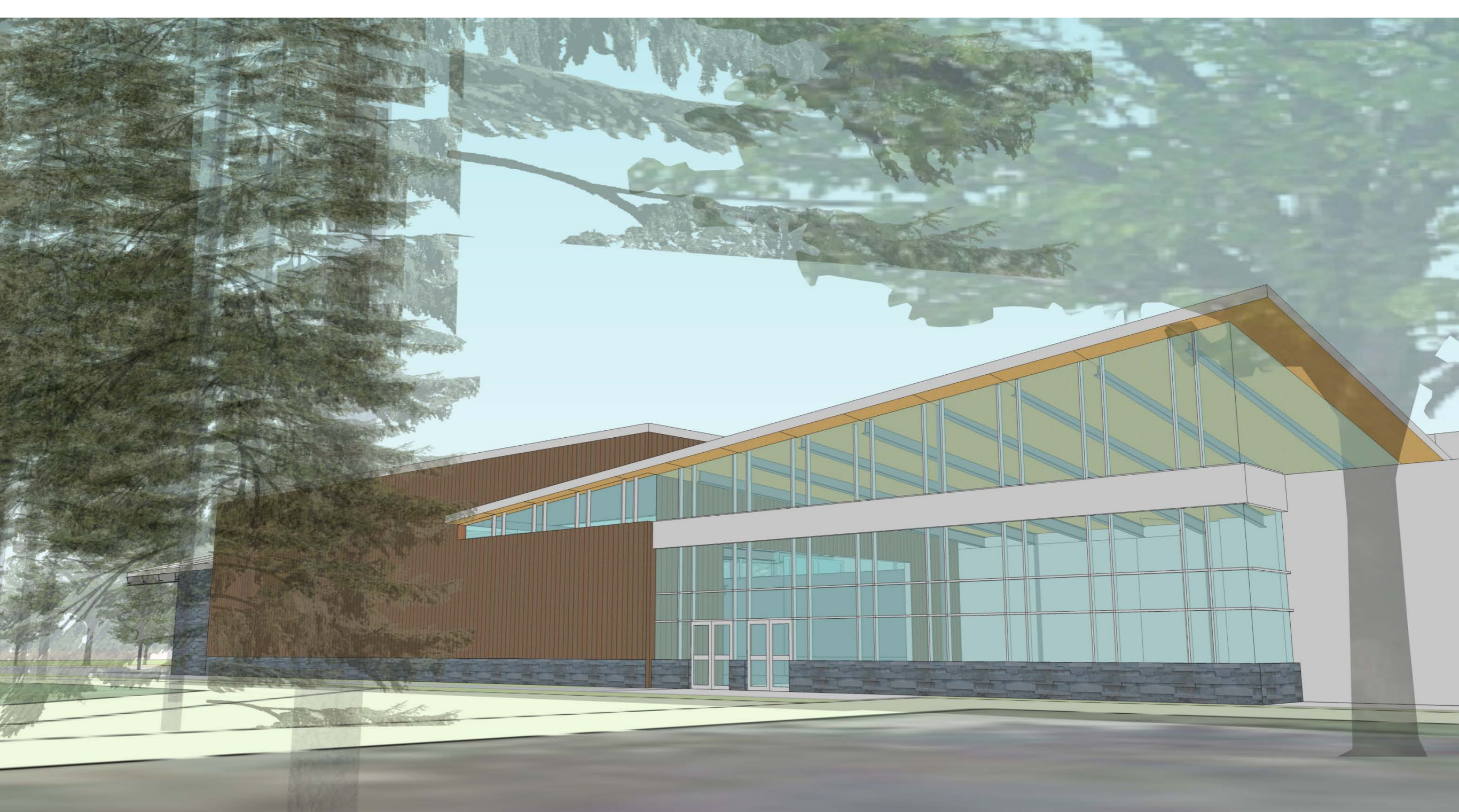
Birdseye view from SE



Birdseye view from NE



East Elevation



Commons on Sandy River side



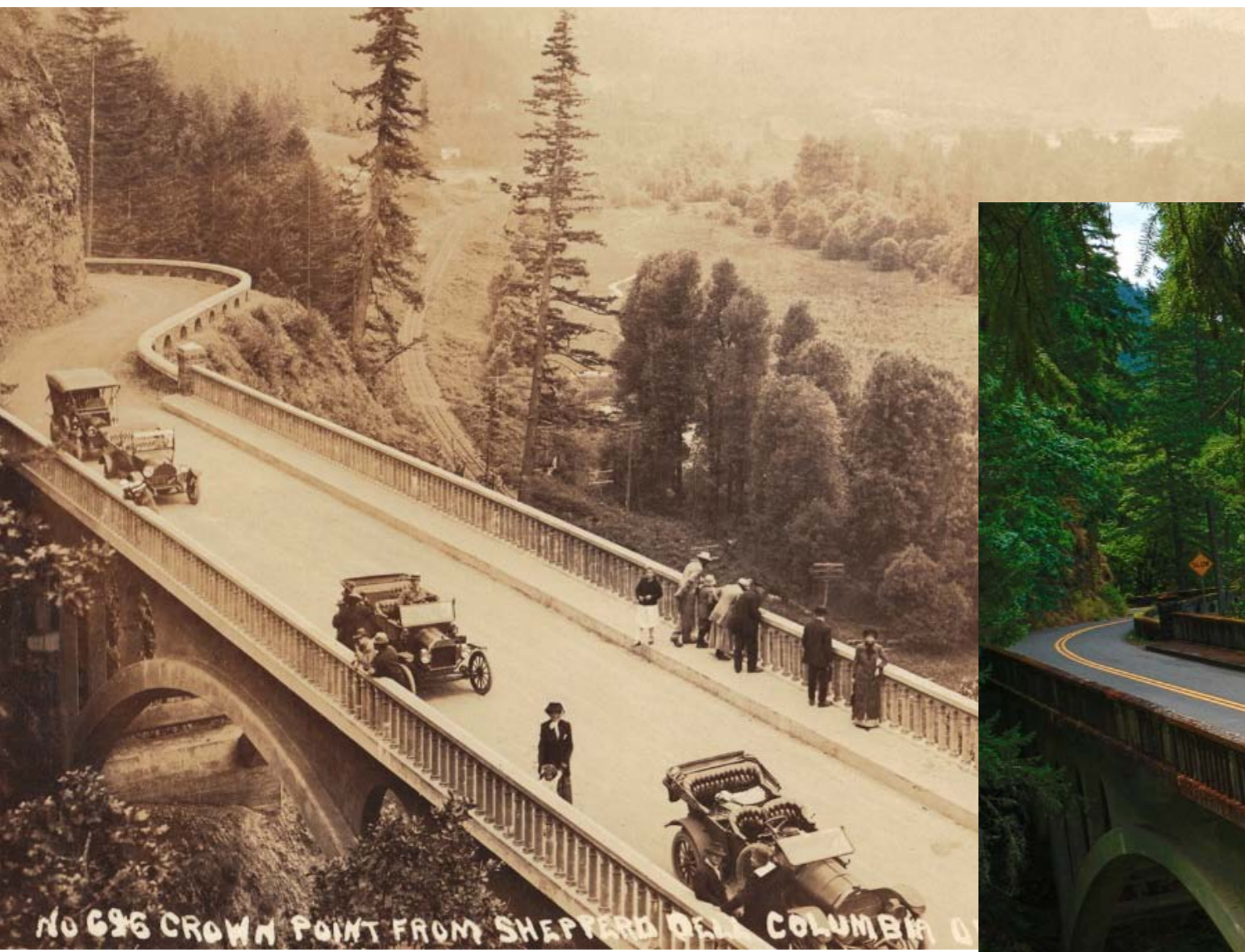
SLC's from Harlow

what makes troutdale...TROUTDALE?





Our History



Our Heritage



Our History



Community



Gateway to the Gorge



Community Art

next steps...

Reynolds School District Board of Directors' Work Session TBD

- Presentation of concept design

Troutdale Elementary School Community Meeting // June 15, 2016 | 6:00 pm to 8:00 pm

- Share concept design with community



Reynolds School District

TROUTDALE ELEMENTARY SCHOOL

Community Design Workshop No. 2

Thank you!

May 31, 2016

BLRB architects