




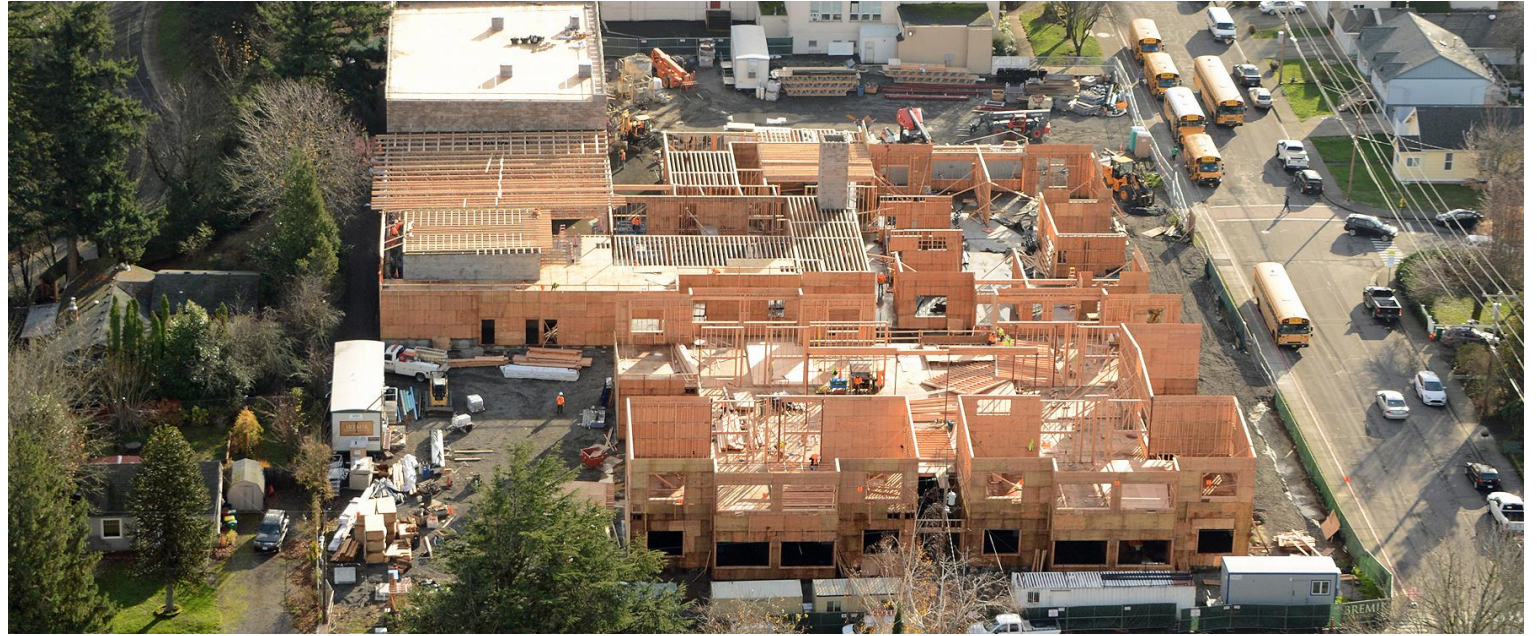
Troutdale Elementary
Aerial Construction Photos
October 2017 to March 2018



Troutdale Elementary
Aerial view - North (left), South (above)
October 2017

An aerial photograph showing the construction of a new building at Troutdale Elementary. The central area is filled with the wooden framing of several interconnected rectangular structures. To the left, a larger, more established building with a flat roof is visible. The site is surrounded by residential houses and mature trees, some of which have yellowing autumn leaves. Several yellow school buses are parked along a street to the right of the construction area. Various construction vehicles, including a yellow excavator and a white truck, are positioned around the site. A white text box with a thin black border is overlaid on the lower-left portion of the image.

Troutdale Elementary
Aerial View – Southwest
October 2017



Troutdale Elementary
Aerial view - North (left), South (above)
December 2017




Troutdale Elementary
Aerial View - Northeast
December 2017



Troutdale Elementary
Aerial view - North (left), South (above)
January 2018




Troutdale Elementary
Aerial View – Northeast
January 2018

An aerial photograph showing the construction of Troutdale Elementary. The main building is under construction, with its roof and walls made of light-colored wooden framing. To the right, there's a large, flat-roofed structure, possibly a gymnasium or cafeteria, which is also under construction. The site is surrounded by residential houses and trees. A road runs along the bottom of the construction area. Various construction materials and equipment are visible on the site.

Troutdale Elementary
Aerial View – Northeast
January 2018



Troutdale Elementary
Aerial view - South (left), North (above)
February 2018

An aerial photograph of Troutdale Elementary school during a major renovation project in February 2018. The school building is a large, multi-winged structure. A significant portion of the exterior walls is covered in blue insulation or temporary cladding, while other sections are made of light-colored concrete or brick. The roof is mostly flat and covered in a layer of snow. To the right of the main building is a smaller, older-looking structure with a gabled roof, also partially covered in snow. In the foreground, there's a parking lot with several cars and a few small utility buildings. To the left, residential houses with snow-covered roofs are visible. In the background, a large body of water, likely a river or lake, stretches across the top of the frame. The surrounding area is a mix of trees, some bare and some evergreen, and more residential development. The overall scene depicts a large-scale construction project in a suburban setting during winter.

Troutdale Elementary
Aerial View – Northeast
February 2018




Troutdale Elementary
Aerial View – Northeast
February 2018



Troutdale Elementary
Aerial View - North (left), South (above)
March 2018



Troutdale Elementary
Aerial View – Northeast
March 2018

An aerial photograph of Troutdale Elementary school during its construction phase in March 2018. The school building is a large, multi-winged structure with a dark roof. The exterior walls are partially finished with green vertical siding, while other sections are covered in blue protective sheathing. The roof is cluttered with construction materials, including large orange-wrapped bundles, white pipes, and various tools. Scaffolding and wooden walkways are visible on the roof and around the building. Several white pickup trucks and a white trailer are parked in the lot to the left. A blue portable toilet is also visible. In the foreground, a red house and a white house are partially visible. The background shows a residential neighborhood with trees and other houses. A white text box with a black border is overlaid in the bottom left corner, containing the text: Troutdale Elementary
Aerial View – Northeast
March 2018.

Troutdale Elementary
Aerial View – Northeast
March 2018