

MAIN ENTRY VIEW



SE 5TH STREET VIEW



SE HARLOW AVE VIEW

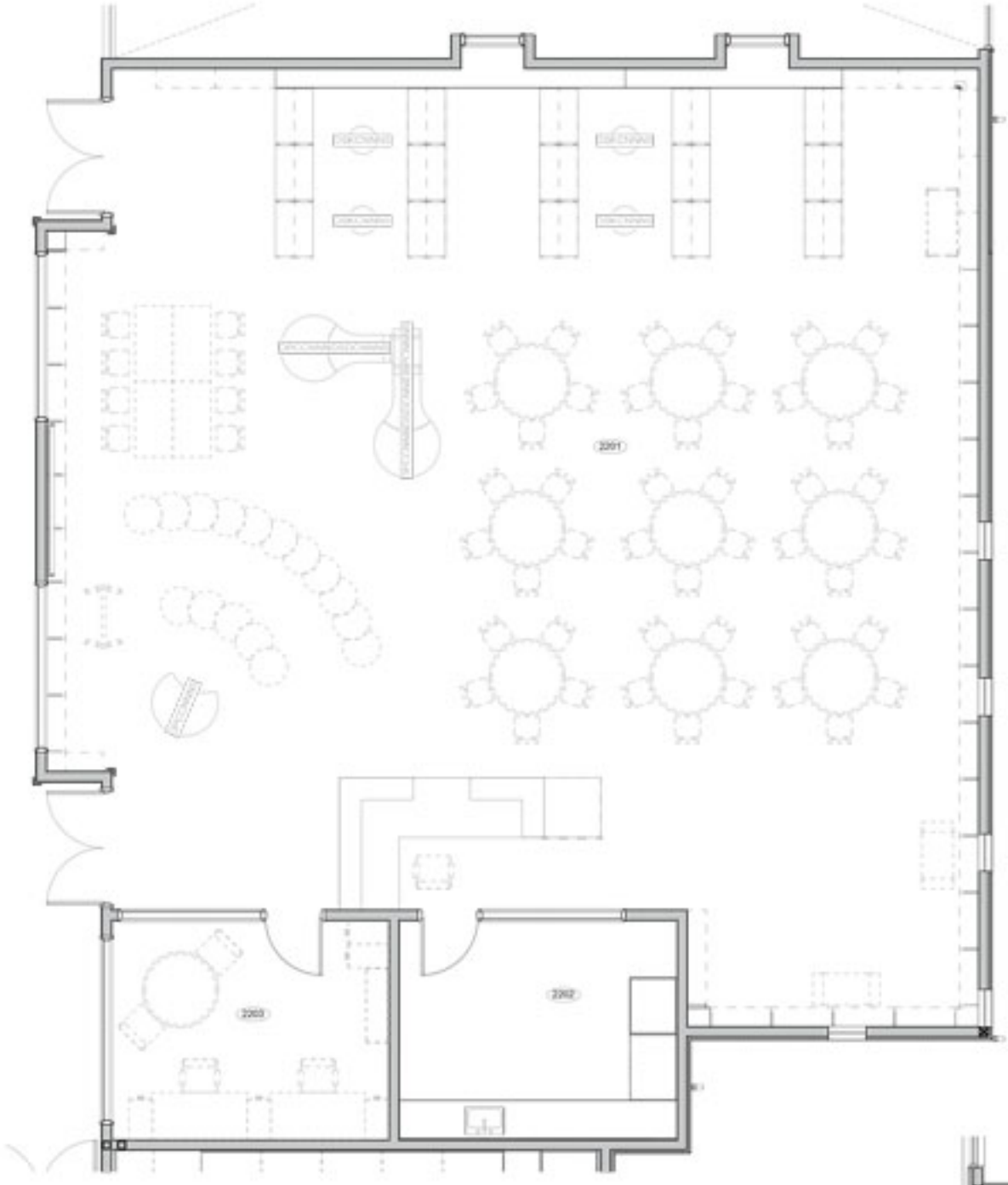


TROUTDALE ELEMENTARY SCHOOL

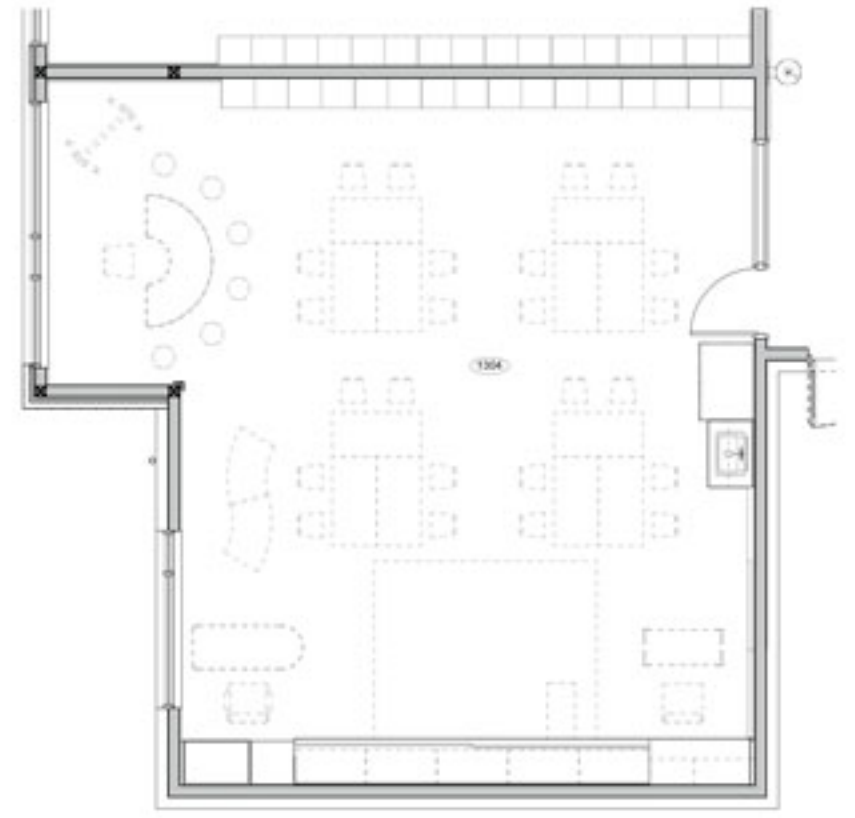
**BLRB** architects



**2015 BOND PROJECTS**



MEDIA CENTER  
0 1 2 4



CLASSROOM  
0 1 2 4



**2015 BOND PROJECTS**

**SITE PLAN**



- NEW BUILDING
- HARD SURFACE
- SOFT PLAY SURFACE
- OUTDOOR LEARNING
- LANDSCAPING



# 2015 BOND PROJECTS

## GROUND FLOOR PLAN



- ADMINISTRATION
- CORE ACADEMIC
- RESTROOMS
- GYM/COMMONS
- CIRCULATION
- BUILDING SUPPORT

**2015 BOND PROJECTS**

**2ND FLOOR PLAN**

