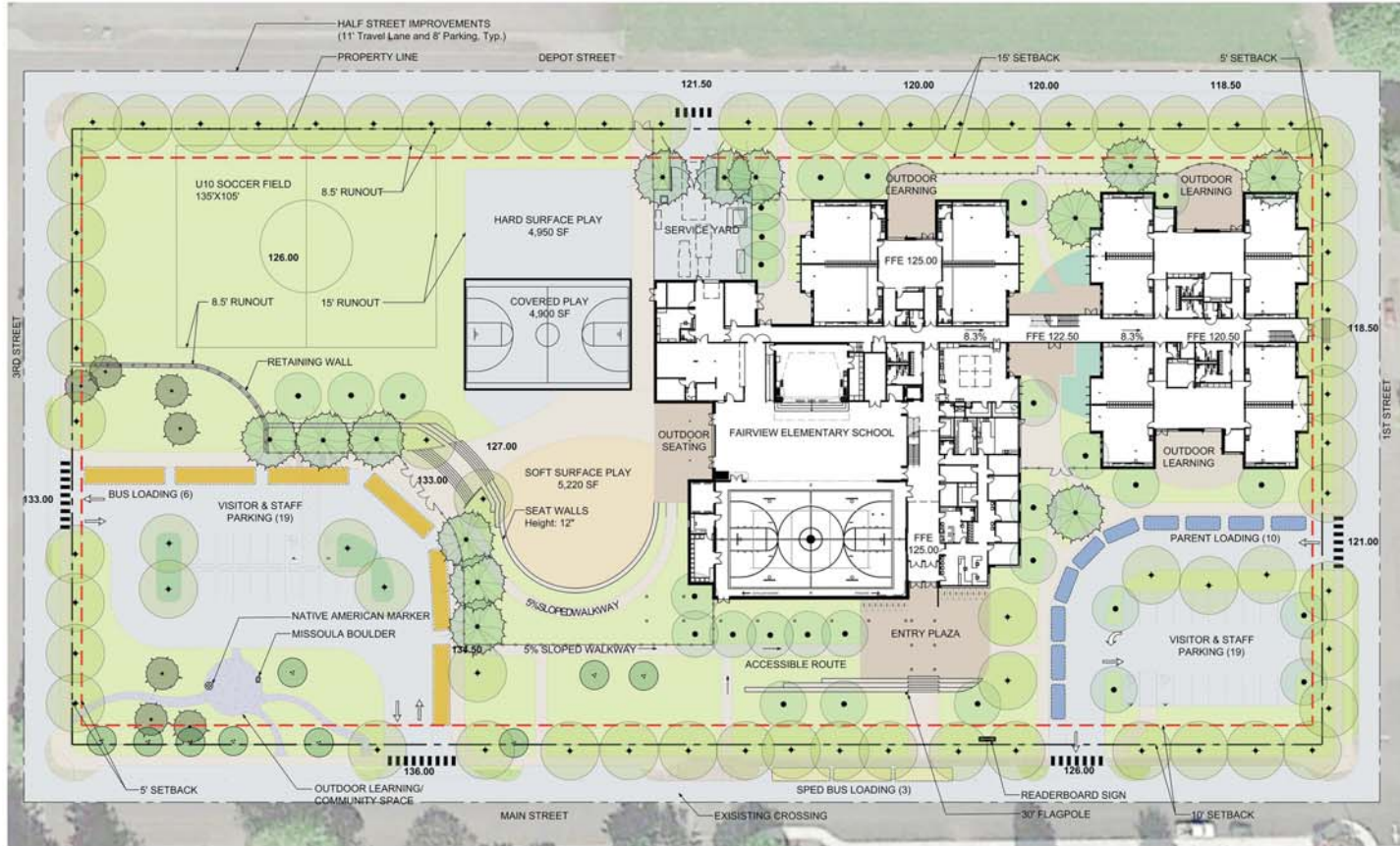


The following pages show the draft schematic designs for Fairview Elementary.

Fairview Elementary School is being replaced with a new school on the same site. Honoring school and community heritage is a guiding principle for the design of the new Fairview Elementary School. Strategic building orientation and siting accommodated the preservation of old-growth trees on school grounds and created an outdoor, shared use space, Heritage Park, to which existing legacy elements will be relocated and preserved. The horizontal lines of the school's exterior, use of brick masonry, and large expanses of glass provide an order to building composition. The integration of contemporary, steel arches in the new exterior entry design evokes the iconic brick arch of the existing school, a nod to Fairview's heritage – with a contemporary, forward-looking twist.

INSPIRATIONAL IMAGES

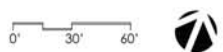


OFF-STREET PARKING TABULATIONS

PERMANENT PARKING: 57 SPACES
PARENT LOADING: 10 SPACES
BIKE PARKING: 32 SPACES

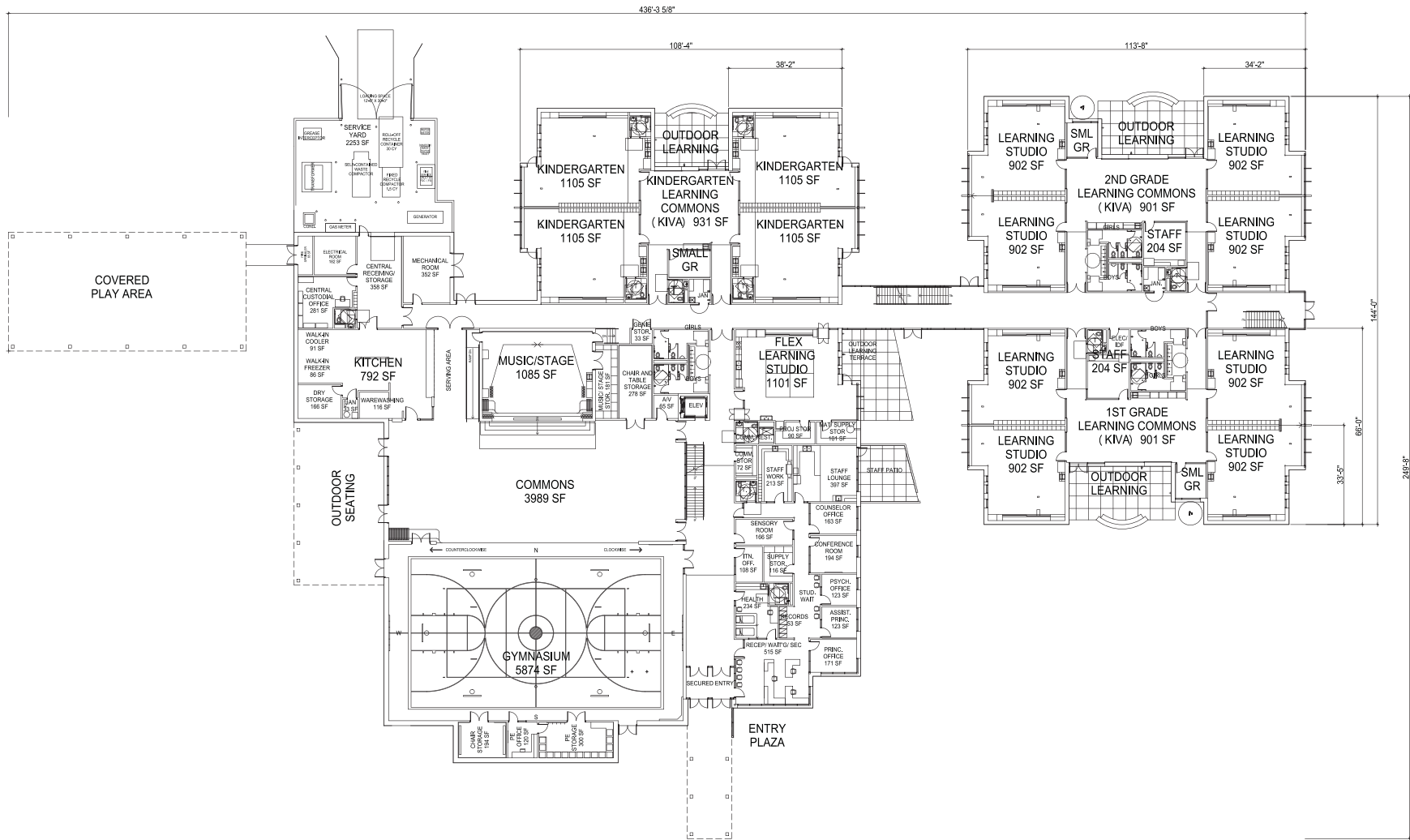
LEGEND

- PROPERTY LINE
- - - SETBACK
- FENCE
- SCHOOL BUS
- SPED BUS
- PARENT VEHICLE
- ASPHALT PAVING
4" AC over 10" of base course.
See Civil.
- CONCRETE PAVING
4" over 4" of base course.
See Civil.
- SOFT SURFACE PLAY AREA
- SPECIAL PAVING AREAS
- PLANT BED/LAWN
- STORMWATER TREATMENT AREA
- DECOMPOSED GRANITE
- PROPOSED TREE
- EXISTING TREE
- BIKE PARKING
- MISSOULA BOULDER
- NATIVE AMERICAN MARKER





BLRB architects



Exterior Wall Assemblies

Brick

- Gypsum Board
- Metal Stud Framing
- Blanket Insulation R13
- Sheathing
- Rigid Insulation R7.5
- Ties/ Anchors
- Brick/ Masonry Veneer

CMU

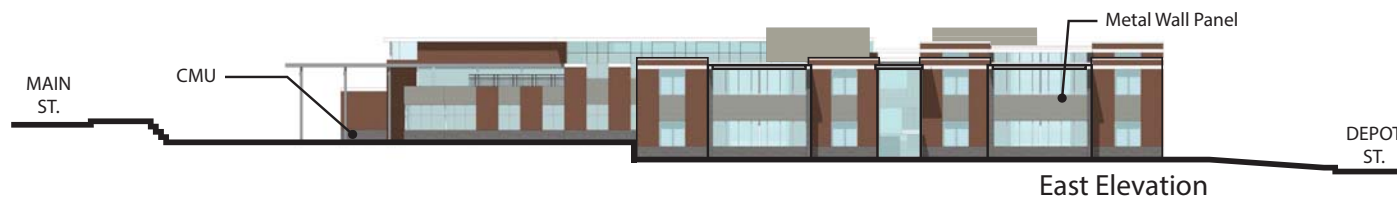
- 12" Concrete Masonry Units
- Rigid Insulation R11.4
- Ties/ Anchors
- Brick Masonry Veneer

Metal Wall Panels

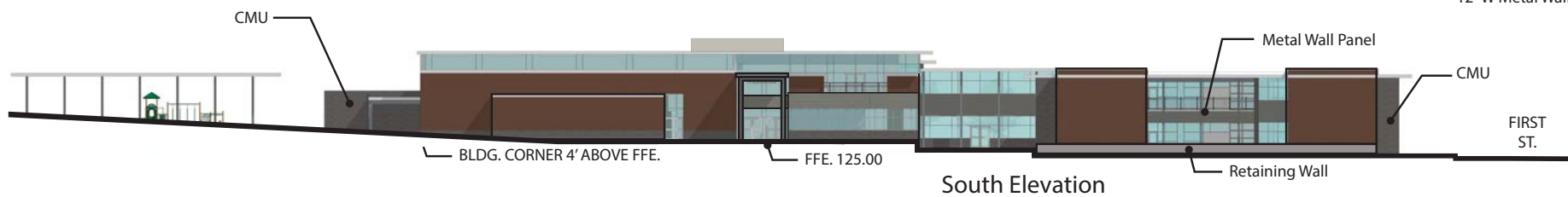
- Gypsum Board
- Metal Stud Framing
- Blanket Insulation R13
- Sheathing
- Rigid Insulation R7.5
- Metal Furring System
- 12" W Metal Wall Panels



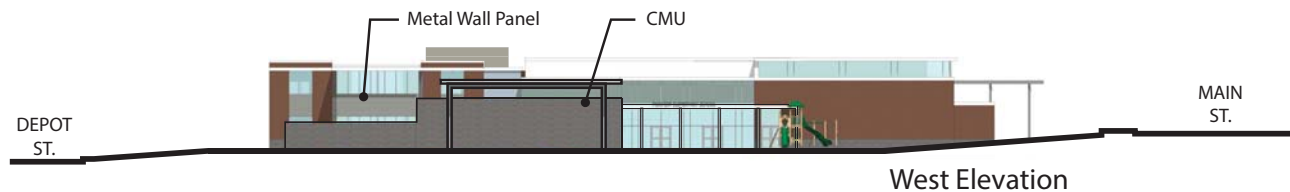
North Elevation



East Elevation

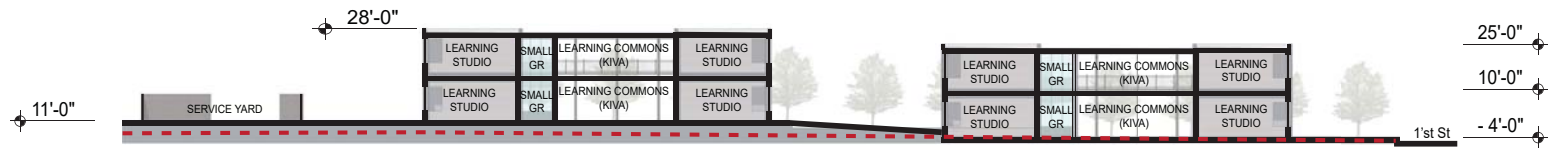


South Elevation

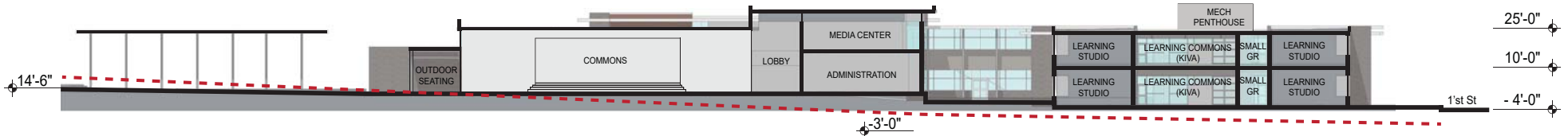


West Elevation

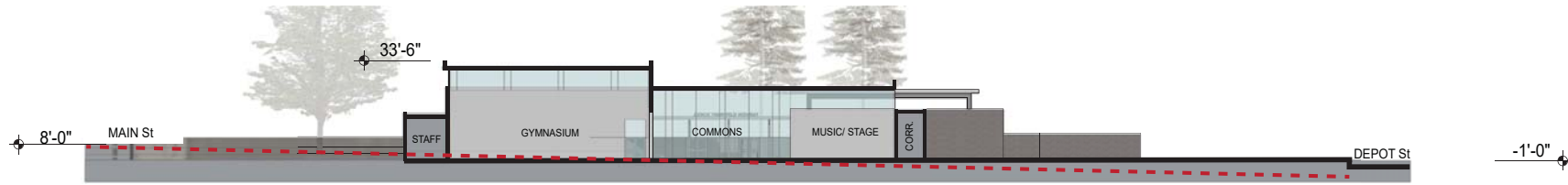
0' 16' 32'



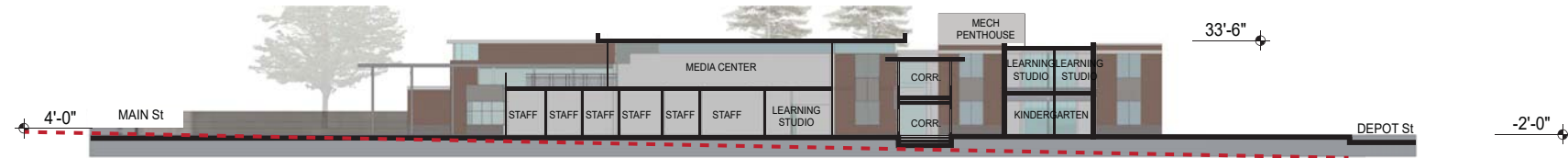
North Section 1



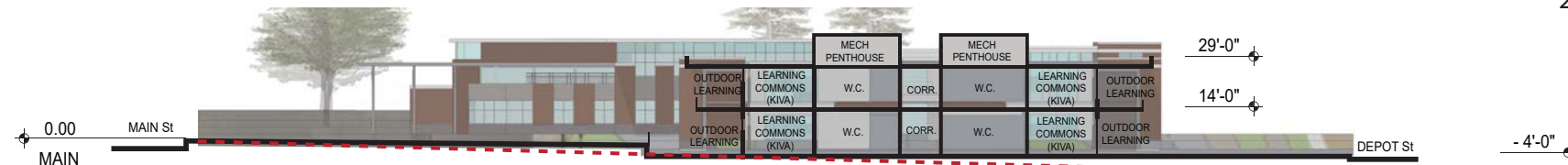
North Section 2



West Section 3



West Section 4



West Section 5

