

The following pages show the draft schematic designs for Reynolds High School additions and renovations.

The preferred schematic designs include:

- A new main entry that provides for a secure entry point to the school and creates a sense of welcome and pride for the Reynolds High School community.
- Complete internal connections between buildings.
- Improved student flow, including convenient new connections between Career and Technical Education programs, science programs, and other academic subjects.
- New general classrooms, new science classrooms and new life skill rooms.
- An enlarged commons area, kitchen, and food service area to improve food delivery and better accommodate student dining and social activities.
- Relocated, centralized suite for counseling / student services, including a more visible career center.
- Lighting and technology upgrades.

This final project scope was based on the bond measure language, guiding principles and community feedback.

What's happening next?

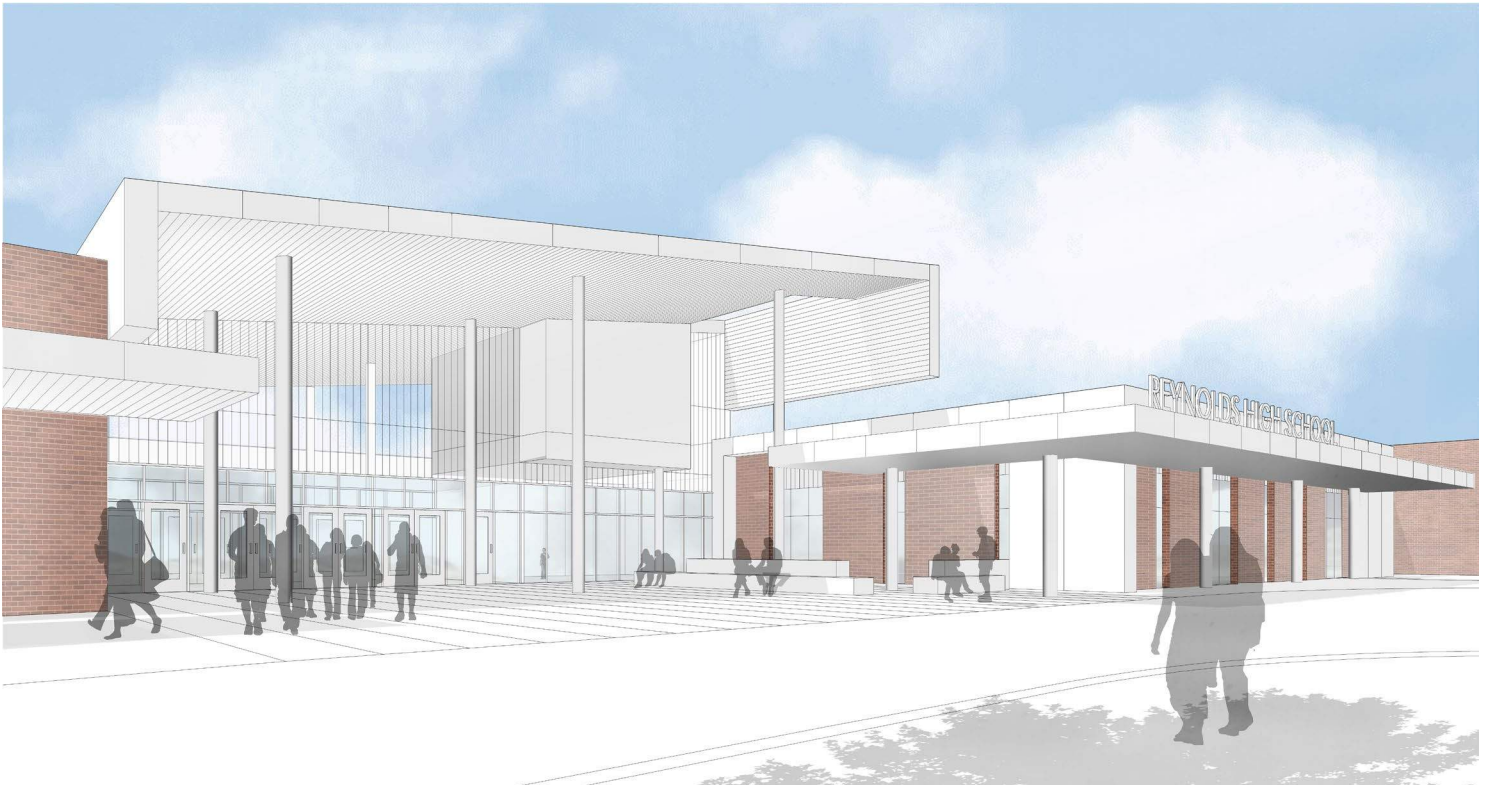
The next phase for the architect is Design Development. The schematic designs will be refined based on technical requirements and detailed information from District staff who understand the unique requirements of each area of the school. The resulting designs and specifications will be used to create final construction drawings.



3D Aerial View Rendered



Rendering Main Entry from Afar



Rendering Main Entry



Rendering View of West Parking Lot Entry

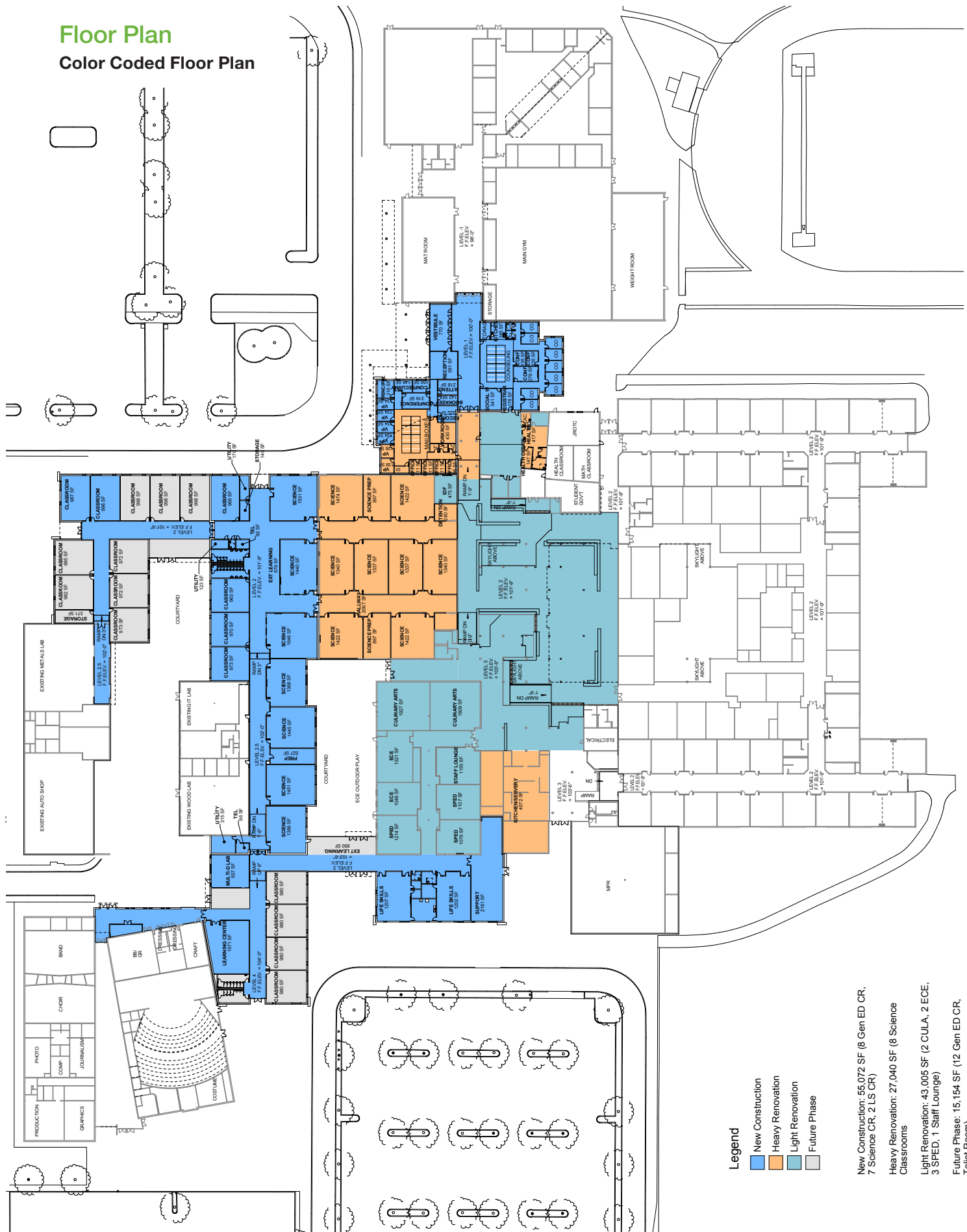


Rendering View from East Parking Lot



Floor Plan

Color Coded Floor Plan



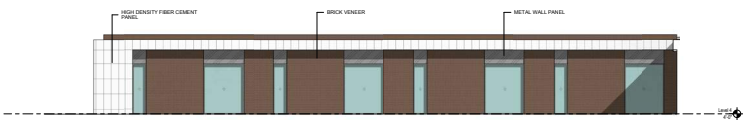
Landscape Plan



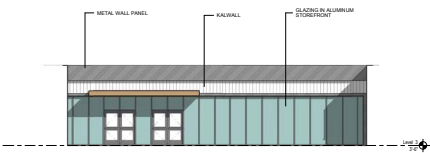
Elevations



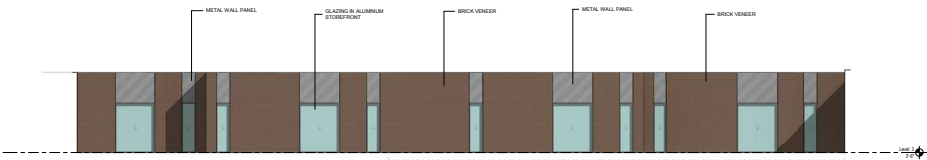
Elevation Entry



Elevation Typical Classroom



Elevation Typical Hallway



Elevation Typical Courtyard Classroom