






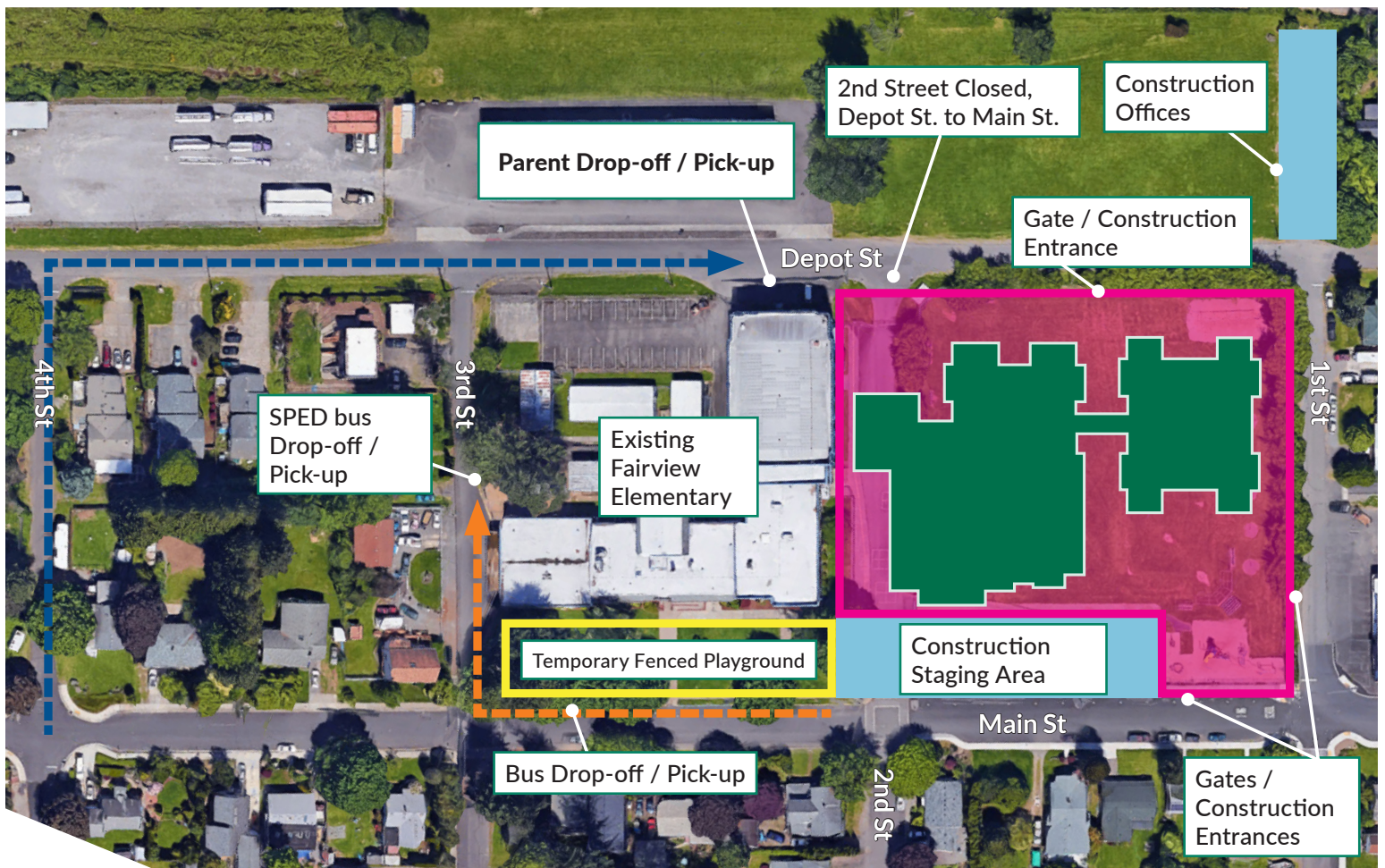


Updated May 17, 2017

Legend

-  Construction fence
-  Fenced playground area for 2017-18
-  New school footprint

-  Construction staging areas
-  Construction equipment/safety area
-  Bus traffic flow
-  Parent traffic flow



**Anticipated Construction Dates (Subject to Change)**

- May 22 Mobilize on site
- May 22 Temporary fencing / erosion control

- May 24 Site clearing and establish building pad (remove play structures)
- May 25 Trailer setup